

Henri Matisse

The Last Works

'Drawing is like making an expressive gesture with the advantage of permanence'.

Henri Matisse became one of the world's most famous painters of the 20th century completely by accident. Whilst convalescing from appendicitis his mother gave him his first set of paints to while away his time.

'From the moment I held the box of colours in my hands, I knew this was my life. I threw myself into it like a beast that plunges towards the thing it loves,' he said.

In his final years Matisse became wheelchair bound and in 1941, with the aid of assistants, he set about creating highly original work using brightly coloured cut-out paper shapes arranged in abstract patterns. These cut paper collages, often on a large scale, were called gouaches découpés.

His Blue Nudes series features prime examples of this technique he called 'painting with scissors'; they demonstrate the ability to bring his eye for colour and geometry to a new medium of utter simplicity, but with playful and delightful power.

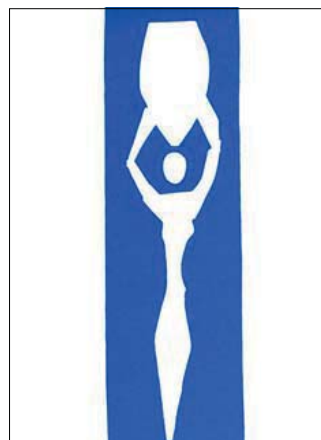
'Instead of drawing an outline and filling in the colour I am drawing directly in colour,' he said.

The first lithographic plates of this work were executed under Matisse's own direction in 1954. The succeeding work was completed under the meticulous supervision of his friend and publisher, Teriade.

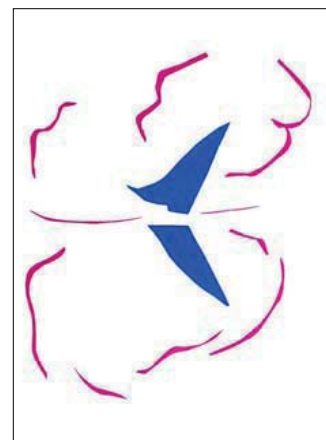
The lithographic plates, in fifteen to twenty impressions of colour, were printed by Mourlot Frères, of Paris, and the monochrome heliogravure plates were printed by the master printer Draeger Freres.

Our 1954 Vintage Prints are Signed in Plate and a Certificate of Authenticity accompanies each one.

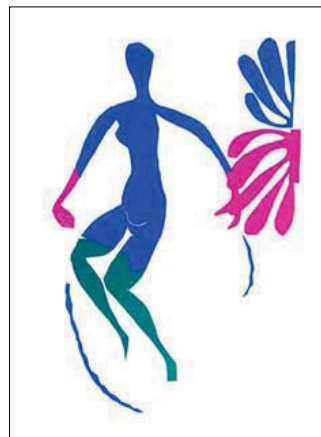
These images are prints published in 1954. They should be not confused with modern posters.



MAT1



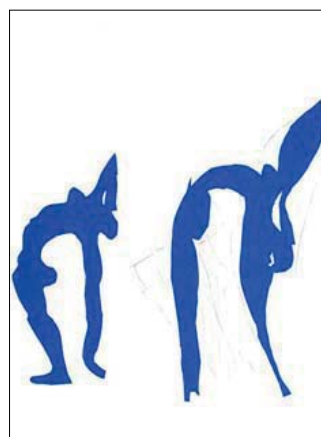
MAT2



MAT3



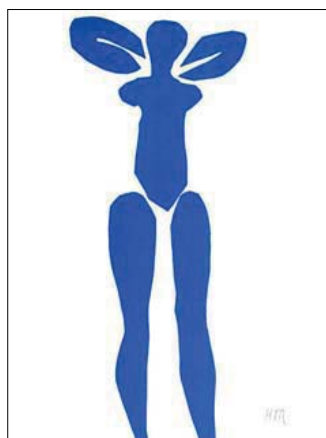
MAT4



MAT5



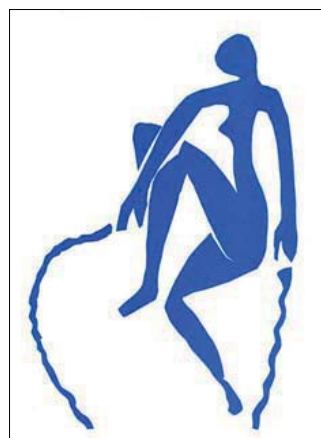
MAT6



MAT7



MAT8



MAT9



MAT10

Henri Matisse 1954 Vintage Prints Collection

These prints are from the 1954 edition. They are not later reproductions and should not be confused with modern posters.



Henri Matisse - The Last Works

Set of Nine | Frame: 806 | Gesso and Silver | Size: 26" x 29" | 66cm x 74cm | Code U

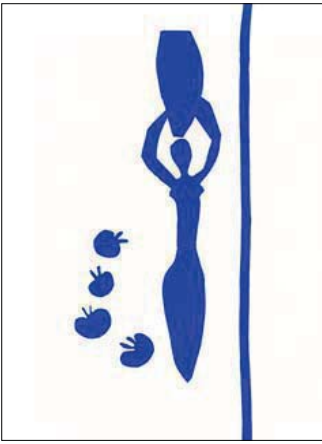
MAT 1	MAT 2	MAT 3
MAT 4	MAT 5	MAT 6
MAT 7	MAT 8	MAT 9





Henri Matisse - The Last Works

MAT17 | Frame: 806 | Gesso and Silver | Size: 26" x 29" | 66cm x 74cm | Code U



MAT11



MAT12



MAT13



MAT14



MAT15



MAT16



MAT17



MAT18



MAT19



MAT20



MAT21



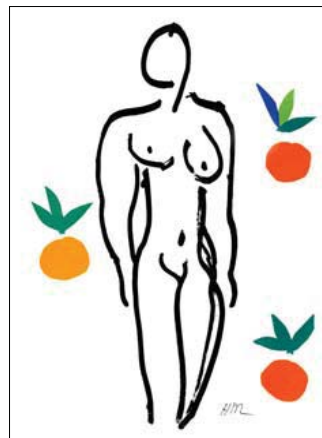
MAT22



MAT23



MAT24



MAT25



MAT26

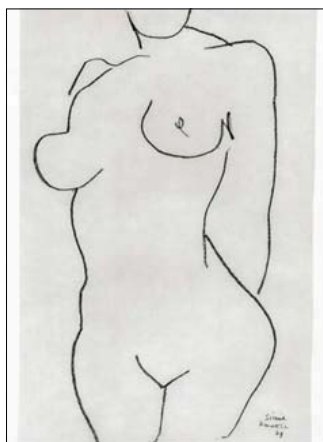
TROWBRIDGE | 1954 Vintage Prints



MAT46



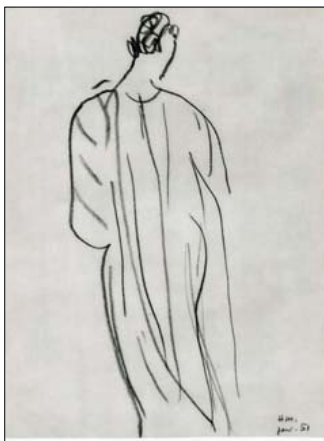
MAT30



MAT48



MAT32



MAT36



MAT33



MAT34



MAT41



MAT39



MAT52



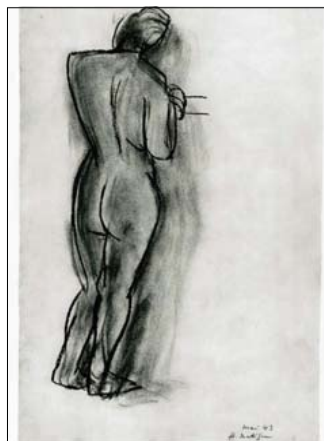
MAT45



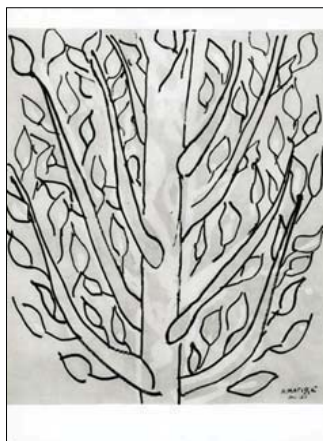
MAT54



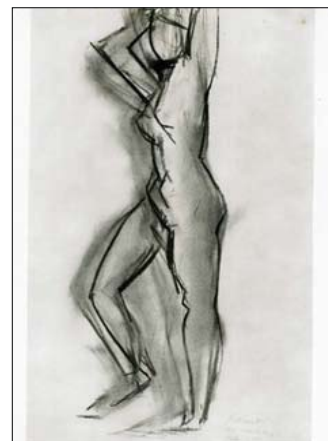
MAT42



MAT31



MAT44



MAT29

Matisse Black and White Sketches



Henri Matisse - The Last Works

MAT30 | Frame: 806 | Gesso and Silver | Size: 26" x 29" | 66cm x 74cm | Code U

TROWBRIDGE | 1954 Vintage Prints



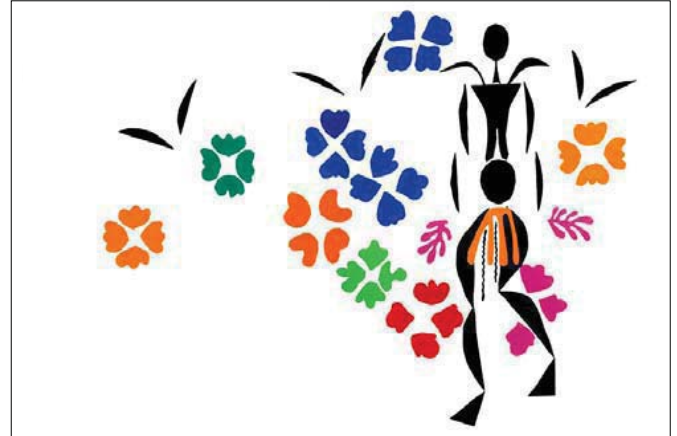
MAT64



MAT63



MAT59



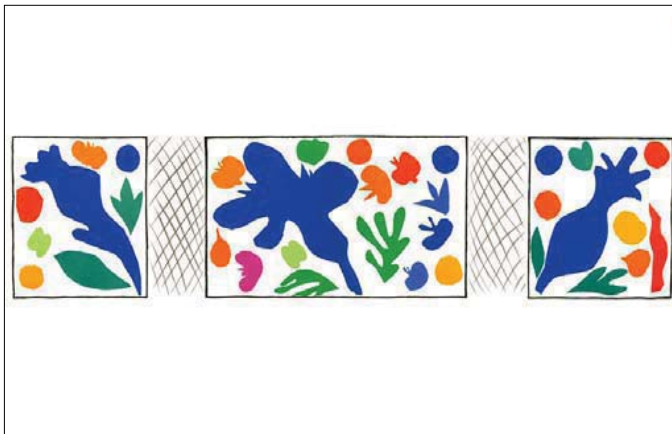
MAT60



MAT62



MAT58



MAT57



MAT61

Henri Matisse 1954 Vintage Print Collection

Set of Eight | Frame Size: 32" x 26" | 82cm x 65cm | Code W



Henri Matisse 1954 Vintage Print Collection

Set of Eight | Frame: 806 | Gesso and Silver | Size: 32" x 26" | 82cm x 65cm | Code W

MAT 59	MAT 62
MAT 64	MAT 61

