

TROWBRIDGE

GALLERY LONDON



555 KINGS ROAD LONDON SW6

TROWBRIDGE

GALLERY LONDON



Trowbridge Gallery, 555 Kings Road, London, SW6 2EB

To Order: 📞 UK: +44 (0)1892 667600 | 📞 US: (336) 886 3549 | ✉️ sales@trowbridge.art

Spring 2026

© TROWBRIDGE Gallery 1981 - 2026. All rights reserved. Images must not be reproduced without written permission.

[trowbridgegallery.com](https://www.trowbridgegallery.com)

Trusted by Designers, Handmade in Britain

Welcome to Trowbridge Gallery London, trusted art partner to the world's leading designers. As a family-run business for over 45 years, we've been dedicated to producing handmade artwork to be treasured for generations to come.

Alongside our in-house artists, we collaborate with both established names and rising talent to curate exclusive, limited-edition works that complement every interior style and genre. Each piece is chosen with a singular aim: to complement beautifully considered interiors and become a lasting legacy.



Over 30,000 artworks



To the Trade



Handmade to order



Lead times of 3 weeks



Drop ship to your client



Air freight delivery with no hidden fees

Watch our video:





CME1



CME2



CME3



CME4



CME5



CME6



CME7



CME8



CME9



Charlotte Morgan | Embellished Curves II

Charlotte Morgan's Embellished Curves radiate warmth, with gentle arcs that could echo the shape of sand dunes and soft pebbles. Gold leaf is applied with delicate precision, creating a golden glow that feels both grounded and ethereal. This collection is an intimate portrayal of abstract beauty, with soft and satisfying tones and shapes.

Code: CME

Frame: 437 - Lemon Gold

Details: Signed by Artist | Limited Edition of 295 | Made by Hand

Outside Frame Sizes Available: 47cm x 58cm (19" x 23") | 66cm x 76cm (26" x 30")





Charlotte Morgan Gold Embellished Palms

A contemporary and abstract interpretation of botanical forms. In this collection, Artist Charlotte Morgan explores the graceful structure of palm fronds, using warm earthy neutrals that evoke the feelings of Mediterranean stone. Radiant gold leaf introduces a gentle sense of luxury.

Code: CGEP

Frame: 612L - Contemporary White with Linen Slip

Details: Signed by Artist
Limited Edition of 295
Made by Hand

Outside Frame Sizes Available:

- 63cm x 63cm (25" x 25")
- 75cm x 75cm (30" x 30")
- 88cm x 88cm (35" x 35")
- 108cm x 108cm (43" x 43")

Collection of 4 Available



CGEP1

CGEP4



CIM1



CIM2



CIM3



CIM4



Charlotte Morgan | Intersecting Moments

Layers of paint and ink build upon one another in this collection of intersecting brushstrokes. The slightly bronze hued oils streak across the plate in these expressive and abstract pieces. The simple golden threads sit on top of the mark-making in an attempt to balance the vigorous strokes with a delicate and simple final touch.

Code: CIM

Frame: 615L - Dark Walnut with Linen Slip

Details: Signed by Artist | Limited Edition of 295 | Made by Hand

Outside Frame Sizes Available: 63cm x 63cm (25" x 25") | 75cm x 75cm (30" x 30")



CIM4

CIM2



GLW1



GLW2



GLW3



GLW4



GLW5



GLW6



Gill Wilson | Paperworks II

By processing organic material into a fine delicate paper, Artist Gill Wilson has produced a series of paper sculptures, each sporting its own unique pattern and shape. Being passionate about the creative potential of plant fibre pulps she uses this exclusively in her work, which is ecologically ethical and sustainable. These pieces are created using a combination of traditional Japanese techniques as well as processes she has developed throughout her career.

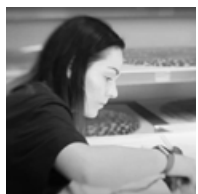
Code: GLW

Frame: 612 - Contemporary White

Details: Signed by Artist | Made by Hand

Outside Frame Sizes Available: 106cm x 106cm (42" x 42")





Emily Wiles Lattice Panels

The inspiration for this ornate triptych comes from the mashrabiya—traditional latticed window screens found in Middle Eastern architecture. Renowned for their intricate wooden latticework, mashrabiya provide shade, ventilation, and privacy, and are most often seen on the upper stories of buildings. Their delicate, repeating patterns are echoed in the detailed design of this triptych, which is finished with finely applied gold embossing, adding a final touch of pure luxury.

Code: ELTP

Frame: 612 - Contemporary White

Details: Signed by Artist
Limited Edition of 295
Made by Hand

Overall Size: 170cm x 125cm (67" x 50")





Charlotte Morgan Papier Forms

From the Creative Studio at Trowbridge comes this three-dimensional collection. Hand sculpted to create an exciting play with texture and shadows, these eight designs take inspiration from plants and corals that live on the ocean floor.

Code: CPF

Frame: 612 - Contemporary White

Details: Signed by Artist | Limited Edition of 50
Made by Hand

Outside Frame Sizes Available:

73cm x 73cm (29" x 29")

86cm x 86cm (34" x 34")

106cm x 106cm (42" x 42")

Collection of 8 Available



ECB1



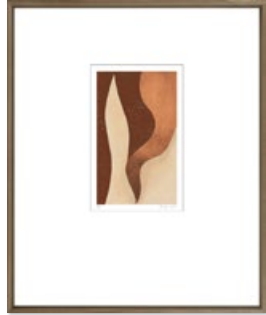
ECB2



ECB3



ECB4



ECB5



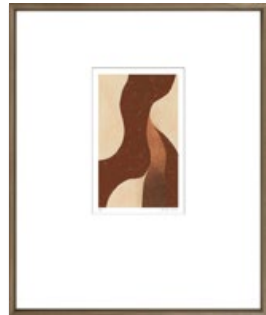
ECB6



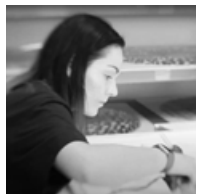
ECB7



ECB8



ECB9



Emily Wiles | Cacao Bronze

Finished with hand applied bronze leaf, each piece in this collection carries a subtle, luminous texture that enhances its tactile presence. Subtle neutral tones are contrasted with deeply coloured copper leaf, offering a rich, chocolatey theme to this collection. Cacao Bronze offers a calm, earthy elegance with a rich handcrafted finish.

Code: ECB

Frame: 438 - Walnut

Details: Signed by Artist | Limited Edition of 50 | Made by Hand

Outside Frame Sizes Available: 47cm x 58cm (19" x 23") | 66cm x 76cm (26" x 30")





Liz Clayton Embellished Leaves

A contemporary collection of delicately painted botanicals with a subtle touch of hand applied silver leaf, thoughtfully placed to represent what could be raindrops or refractions of light. The subtle silver accents appearing as circles or linear motifs enhance the ethereal quality of each piece and introduce a quiet luxury to this collection that captures the graceful energy of botanical life.

Code: LEL

Frame: 624L - Contemporary Silver with Linen Slip

Details: Signed by Artist | Limited Edition of 50
Made by Hand

Outside Frame Sizes Available:

88cm x 105cm (35" x 42")

108cm x 127cm (43" x 50")

Collection of 8 Available



LEL2



Liz Clayton Embellished Palms

A contemporary and slightly abstract take on the botanical theme. Here, artist Liz Clayton has taken the form and shape of striking palm leaves and introduced a subtle sense of luxury with thoughtfully placed silver accents. The lines of silver that run through each leaf, draws our eye from one side to another, whilst the chosen shade of blue suggests a gently rippling water which complements the natural curves and sense of movement that accompanies this collection.

Code: LEP

Frame: 624L - Contemporary Silver with Linen Slip

Details: Signed by Artist | Limited Edition of 50
Made by Hand

Outside Frame Sizes Available:

88cm x 105cm (35" x 42")

108cm x 127cm (43" x 50")

Collection of 4 Available



LEP1

LEP3



Charlotte Morgan | Gold Palms

The Monstera palm leaves are silhouetted against the rich navy background, creating instant excitement with the bold gold leaf gilding. The artwork has a refined, modern aesthetic, with a touch of natural luxury. The shimmering gold leaf catches the light to form a dynamic interplay between textures and reflections of light.

Code: CMPG

Frame: 637 - Lemon Gold

Details: Signed by Artist | Limited Edition of 50 | Made by Hand

Outside Frame Sizes Available: 49cm x 60cm (20" x 24") | 69cm x 79cm (27" x 31")
86cm x 103cm (34" x 41") | 97cm x 114cm (38" x 45") | 106cm x 125cm (42" x 50")

Collection of 6 Available



CMPG1



CMPG2





Charlotte Morgan Blue Corals

These intricate blue velvet corals are made by hand at Trowbridge. Each coral is carefully placed on a sheer see-through fabric panel within a shadow box frame. The illusion created is of the coral 'floating' within the frame. These bestselling hand made pieces are also available in Silver Leaf or White or Navy or Pink Velvet.

Code: CMBC

Frame: 624 - Contemporary Silver

Details: Signed by Artist | Limited Edition of 50
Made by Hand

Outside Frame Sizes Available:
69cm x 79cm (27" x 31")

Collection of 8 Available





Charlotte Morgan Chocolate Floating Leaves

Eye catching and modern, our unique handmade collections utilise the transparency of Perspex to elevate and suspend designs within a frame. The optional linen backboard offers a choice for either full transparency; which allows for the shadow of the artwork to be cast onto the wall behind, or to create a specimen-like floating feature within the frame, in warm neutral tones.

Code: CFLC

Frame: 615 - Dark Walnut

Details: Signed by Artist | Limited Edition of 50
Made by Hand

Outside Frame Sizes Available:
75cm x 89cm (30" x 36")

Collection of 4 Available



CFLC1

CFLC3

CFLC4



Charlotte Morgan Silver Eucalyptus Stems

Real eucalyptus stems are pressed and dried to create the unique specimens used in this artwork. After the stems are dried, they are pruned back to a desired shape and then transformed into stunning metallic sprigs. The stems are given a brush of lemon shellac to add just a hint of warmth to the silver tones. After which, each piece is then hand sewn to a linen canvas in a pleasing arrangement.

Code: MEUC

Frame: 624 - Contemporary Silver

Details: Signed by Artist | Limited Edition of 50
Made by Hand

Outside Frame Sizes Available:
65cm x 82cm (26" x 33")

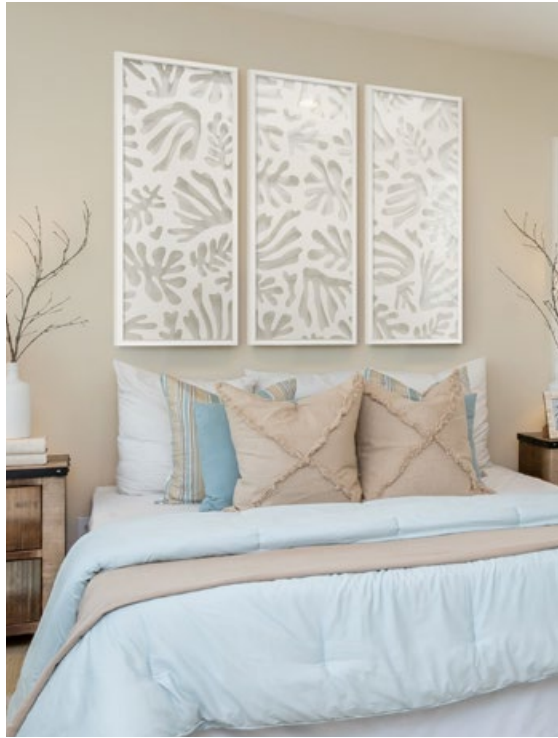
Collection of 6 Available



MEUC1

MEUC2

MEUC6



Charlotte Morgan Shapes and Shadows

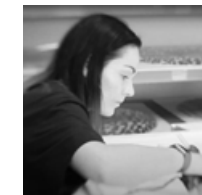
Hand painted abstract shapes are suspended on perspex above a highly textured background, to cast a variety of interesting shadows and create depth. Simple, modern and fresh.

Code: CDT

Frame: 612 - Contemporary White

Details: Signed by Artist | Limited Edition of 50
Made by Hand

Overall Size: 170cm x 125cm (67" x 50")



Emily Wiles Chambray

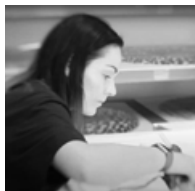
These lines swirl and intermingle across each panel, creating a pattern of strands and knots as they dance amongst each other. The velvet-flocked design sits perfectly on the linen textured background.

Code: ETC

Frame: 612 - Contemporary White

Details: Signed by Artist | Limited Edition of 50
Made by Hand

Overall Size: 170cm x 125cm (67" x 50")



Emily Wiles Enchanted Summer

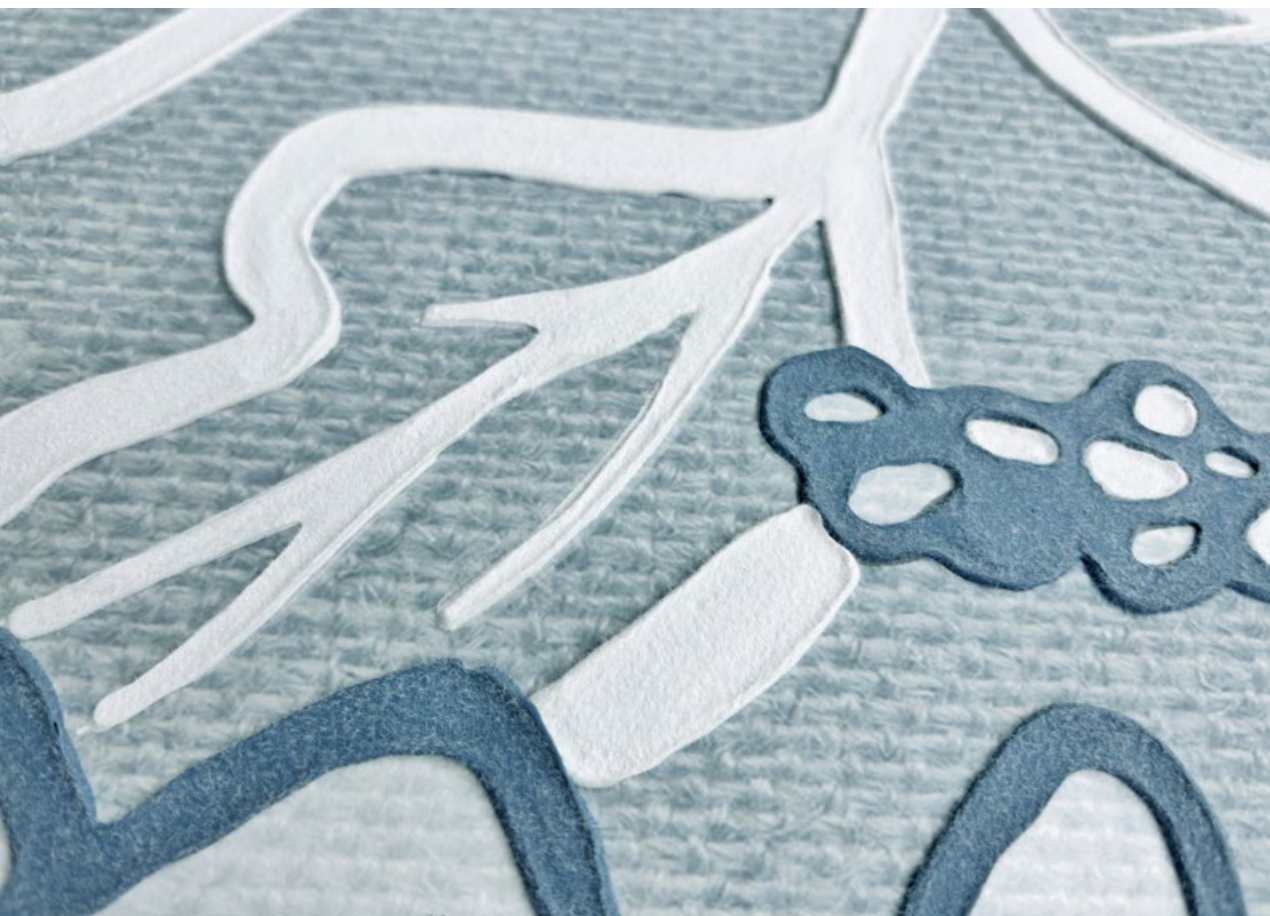
Bursting with life, the delicate foliage curves and falls amongst the hue of peaceful blues. Reminiscent of wallpaper trends in the 19th century, the naturalistic pattern flows through each panel with the addition of a raised soft velvet texture.

Code: ESE

Frame: 612 - Contemporary White

Details: Signed by Artist | Limited Edition of 295
Made by Hand

Overall Size: 170cm x 125cm (67" x 50")



Gilded Chinoiserie

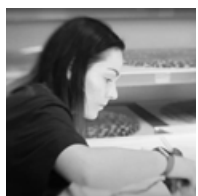
Gilded Chinoiserie is a subtle and elegant floral composition where hand-applied gold leaf adds a touch of opulence. Its delicate details bloom with timeless grace, echoing classic chinoiserie refinement in a contemporary tone. This piece is a soft excellent example of modern artistry and historic tradition intertwined.

Code: GIC

Frame: 612 - Contemporary White

Details: Made by Hand

Overall Size: 170cm x 125cm (67" x 50")



Emily Wiles Kintsugi

The practice of Kintsugi teaches that when a broken object is repaired using gold, the object is more beautiful having recovered from being broken. In a similar way, these Kintsugi style flowers add a layer of elegant refinement by using historical elements. Pieces of Japanese Fantasy Flower become intertwined with modern pattern, all linked by simple golden lines. The compositions are like pieces of pottery or tile, that find themselves coming together in this thoughtful and delicate reimagining.

Code: EWK

Frame: 615 - Dark Walnut

Details: Signed by Artist | Limited Edition of 295
Made by Hand

Outside Frame Sizes Available:

49cm x 60cm (20" x 24")

69cm x 79cm (27" x 31")

97cm x 114cm (38" x 45")

Collection of 6 Available



EWK3

EWK1

EWK6



EWGO1



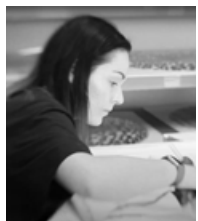
EWGO2



EWGO3



EWGO4



Emily Wiles | Golden Oasis

An oasis gives us respite, peace, and a small slice of paradise - in a similar sense, this collection of artwork is a refreshing pool of beauty, with its golden floral motifs punctuating the deep blue water within. Royal navy and gold leaf has the powerful and feminine presence that exudes elegance, while the circular shape is modern and pleasing.

Code: EWGO

Frame: 637 - Lemon Gold Wedge

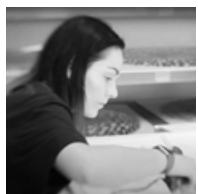
Details: Signed by Artist | Limited Edition of 295 | Made by Hand

Outside Frame Sizes Available:

73cm x 73cm (29" x 29") | 86cm x 86cm (34" x 34") | 106cm x 106cm (42" x 42")



EWGO1



Emily Wiles Blossoming Orbs

Blossoming Orbs are a delicate, bespoke design that features hand-painted and flocked artwork in classic white paint, placed on a soft neutral backing. The design is geometric yet distinctly feminine, with curving lines and swooping forms, all contained within a circle. The Blossoming Orbs are easily placed in both classic and modern interiors alike.

Code: EBO

Frame: 624 - Contemporary Silver

Details: Signed by Artist | Limited Edition of 295
Made by Hand

Outside Frame Sizes Available:

86cm x 86cm (34" x 34")

106cm x 106cm (42" x 42")

Collection of 4 Available



Garden of Mariposa

This statement piece is composed of six individual panels, coming together to form a single, immersive composition. Across the panels, traditional butterflies and lush foliage emerge in the foreground, layered over delicate garden scenes that evoke a sense of timelessness and quiet wonder. Vibrant blue and yellow butterflies take centre stage, framed by richly coloured foliage in reds, orange and yellow for a playful sense of whimsy. Leaves, winding vines and a hand finished gold ribbon wind their way through the composition, creating a sense of movement and organic flow that connects each panel.

Code: GDNM

Frame: 437 - Lemon Gold

Details: Made by Hand

Overall Size: 272cm x 144cm (107" x 57")



Embellished Hummingbirds

Embellished Hummingbirds offers a contemporary reimagining of nature's most delicate creatures, each piece hand-finished with glowing rings of gold. Their wings seem to reach out in mid-flight, caught between motion and stillness. This series captures the beauty of these stunning birds, with rich colours on a neutral background.

Code: EHB

Frame: 437 - Lemon Gold

Details: Made by Hand

Outside Frame Sizes Available:

59cm x 59cm (23" x 23")

71cm x 71cm (28" x 28")

Collection of 4 Available



EHB1

EHB3

EHB4



CEG1



CEG2



CEG3



CEG4



CEG5



CEG6



CEG7



CEG8



CEG9



Charlotte Morgan | Embellished Geometrics

In Embellished Geometrics, Charlotte Morgan combines sharp angles and sweeping curves into a striking geometric collection, softened by artisanal handwork. Gold leaf defines each angular edge, turning geometry into grace. These simple primitive shapes are reimagined as modern treasures, radiant and refined.

Code: CEG

Frame: 421 - Contemporary Black

Details: Signed by Artist | Limited Edition of 50 | Made by Hand

Outside Frame Sizes Available: 47cm x 58cm (19" x 23") | 66cm x 76cm (26" x 30")

CEG3



CEG4





Charlotte Morgan Floating Leaves in Silver

Floating Leaves in Silver is a glamorous ode to nature suspended in time, with each handmade leaf held in space with a Perspex plinth. This is where the artistic craftsmanship shines - the leaves float in mid-air. The commanding silver leaf and effortless floating design bring a sense of stillness and sophistication to any interior.

Code: CFLS

Frame: 624 - Contemporary Silver

Details: Signed by Artist
Limited Edition of 50
Made by Hand

Outside Frame Sizes Available:
75cm x 89cm (30" x 36")

Collection of 4 Available



CFLS2



CFLS1





FFL1



FFL2



FFL3



FFL4



FFL5



FFL6



Charlotte Morgan | Silver Fresco Flowers

In Silver Fresco Flowers, Charlotte Morgan breathes new life into botanical tradition with a delicate fusion of silver leaf and layered acrylic washes. Each flower emerges from a linen canvas with hand painted elegance - textured, yet soft, and steeped in traditional botanical study. These artworks evoke the aged beauty of ancient frescoes, now reborn in a modern, transitional form.

Code: FFL

Frame: 624 - Contemporary Silver

Details: Signed by Artist | Limited Edition of 50 | Made by Hand

Outside Frame Sizes Available: 67cm x 78cm (27" x 31")



FFL1

FFL3



Charlotte Morgan Bouquet Of Colour II

Artist Charlotte Morgan has taken floral still life as her inspiration for these works. There are suggestions of blossom, fruit and dappled sunlight, with the provocative choice of colour adding to the impressionistic feel. In fact, they're anything but 'still' life works, with a vitality of their own.

Code: CBQ

Frame: 612 - Contemporary White

Details: Signed by Artist | Limited Edition of 295 | Giclée Fine Art

Outside Frame Sizes Available:

45cm x 45cm (18" x 18") | 61cm x 61cm (25" x 25")
73cm x 73cm (29" x 29") | 86cm x 86cm (34" x 34")
97cm x 97cm (38" x 38") | 106cm x 106cm (42" x 42")

Collection of 12 Available



CBQ5



CBQ1





CPOC1



CPOC2



CPOC3



CPOC4



CPOC5



CPOC6



CPOC7



CPOC8



CPOC9



Charlotte Morgan | Palette of Colour

The power behind this collection of nine by artist Charlotte Morgan is the strength of the colour in the pieces. These are happy artworks, joyful and full of life. While each is different, when viewed as a whole, they almost speak a language of their own. The primary colours in many have a sense of mischief, while spaces left white could be taken for buildings, window frames, horizons or movement itself. And whichever formation these works are viewed or presented in, they have a vitality that comes from a careful study of precisely which colours work alongside others.

Code: CPOC

Frame: 424 - Contemporary Silver

Details: Signed by Artist | Limited Edition of 75 | Giclée Fine Art

Outside Frame Sizes Available: 47cm x 58cm (19" x 23") | 66cm x 76cm (26" x 30")



CPOC3



CPOC1



CPOC7



CAP1



CAP2



CAP3



CAP4



CAP5



CAP6



CAP7



CAP8



CAP9



Charlotte Morgan | Abstracted Pebbles

This collection was created with the technique of mono-printing, building layers of texture with one-of-a-kind mark-making. The strong background comes from the use of an etched copper plate, that when pressed into the paper creates a classic printmaking look. The streaks of paint accompanied by the scattered pebbles have a mesmerising quality.

Code: CAP

Frame: 624L - Contemporary Silver with Linen Slip

Details: Signed by Artist | Limited Edition of 295 | Giclée Fine Art

Outside Frame Sizes Available: 51cm x 62cm (21" x 25") | 71cm x 81cm (28" x 32")



CAP2

CAP3



CCC5



CCC1



CCC3



Charlotte Morgan Collages II

Simple but effective, these abstracts which feature a perfectly balanced composition of organic shapes and curves, offer a soft and neutral final touch to any interior space, with the carefully considered subtle and complimentary colour palette.

Code: CCC

Frame: 400 - Oak

Details: Signed by Artist | Limited Edition of 75
Giclée Fine Art

Outside Frame Sizes Available:

33cm x 41cm (13" x 17")

47cm x 58cm (19" x 23")

66cm x 76cm (26" x 30")

Collection of 9 Available



CTA1



CTA2



CTA3



CTA4



CTA5



CTA6



CTA7



CTA8



CTA9



Charlotte Morgan Neutral and Taupe Abstracts

The collection embraces calm with this ensemble of still-life in a neutral palette of colour. It features a charming series of simplified organic shapes with clean lines, striking a balance that is modern yet timeless. The muted colours of soft taupe's, warm greys and gentle creams let the shapes and negative space exude quiet sophistication.

Code: CTA

Frame: 400 - Oak

Details: Signed by Artist | Limited Edition of 75 | Giclée Fine Art

Outside Frame Sizes Available: 47cm x 58cm (19" x 23") | 66cm x 76cm (26" x 30")



CTA3

CTA4

CTA1



Charlotte Morgan Double Leaves II

The use of screen printing gives the Double Leaves layers of depth, presenting each shape as a pair, whilst also allowing the viewer to 'separate' them to consider each individually. New textures form as the varied colours interact with each other, creating new forms within the piece itself.

Code: CDV

Frame: 424 - Contemporary Silver

Details: Signed by Artist | Limited Edition of 295 | Giclée Fine Art

Outside Frame Sizes Available:

47cm x 58cm (19" x 23") | 66cm x 76cm (26" x 30")

Collection of 12 Available



CDV1



CDV7



CDV6



CDV2



CDV8



CDV5





BPO1



BPO2



BPO3



BPO4



Briony Piper | Organic Repose

In a sophisticated and refined palette of ochre, warm beiges and deep blacks, this collection explores a balance between nature and abstraction. It draws loosely on organic botanical forms, whilst remaining boldly graphic and contemporary. Fluid, sweeping lines intersect with structured negative space, giving each artwork a dynamic yet harmonious presence. Whether displayed as a collection or individually, they bring warmth, depth and understated elegance to any interior with a cohesive visual narrative.

Code: BPO

Frame: 640L - Soft Black with Linen Slip

Details: Signed by Artist | Limited Edition of 295 | Giclée Fine Art

Outside Frame Sizes Available:

47cm x 47cm (19" x 19") | 63cm x 63cm (25" x 25") | 75cm x 75cm (30" x 30") | 88cm x 88cm (35" x 35")
99cm x 99cm (39" x 39") | 108cm x 108cm (43" x 43")



BPO1

BPO2



Briony Piper Sand and Clay

Sand and Clay is a carefully constructed collection of abstracts that keeps the eye travelling throughout. The earthy tones give the impression of a sandstone wall, and the energy and expression of the brushstrokes offer further curiosity, a reason to take a closer look.

Code: BPC

Frame: 400 - Oak

Details: Signed by Artist | Limited Edition of 75
Giclée Fine Art

Outside Frame Sizes Available:

- 47cm x 58cm (19" x 23")
- 66cm x 76cm (26" x 30")
- 84cm x 101cm (33" x 40")
- 94cm x 112cm (37" x 44")
- 106cm x 125cm (42" x 50")

Collection of 6 Available



BPC6

BPC5

BPC4



Nicola Bonney Echoes

The juxtaposition of gentle gradients with the stronger shapes taking the center stage, it's easy to drift away and imagine it as the elements of a distant ethereal place. The texture and detail of the artwork is fantastic.

Code: NBE

Frame: 624 - Contemporary Silver

Details: Signed by Artist | Limited Edition of 295
Giclée Fine Art

Outside Frame Sizes Available:

- 60cm x 49cm (24" x 20")
- 79cm x 69cm (31" x 27")
- 103cm x 86cm (41" x 34")
- 114cm x 97cm (45" x 38")
- 125cm x 106cm (50" x 42")

Collection of 6 Available



NBE2



Nicola Bonney Echoes Triptych I

This abstract artwork features a soft, ethereal composition, with thick and expressive brushstrokes suggesting a sense of movement and invigorating energy. Our eyes are guided from the left panel to the right, with the focal point being used to create a perfect sense of balance in colour and texture. The piece features cool hues of green and blue, suggesting themes of freedom, nature and the intangible quality of a passing moment

Code: NBET1

Frame: 612 - Contemporary White

Details: Signed by Artist | Limited Edition of 295
Giclée Fine Art

Overall Size: 170cm x 125cm (67" x 50")



Nicola Bonney Elements Triptych III

Elements Triptych III by Nicola Bonney is a masterclass in harmony, where layered oil brushstrokes evoke the shifting moods of earth and air. Colour and form drift in and out of focus like a distant horizon. This piece is quietly powerful - elegant, grounded, and full of soul. The delicate paint texture is remarkable on the canvas.

Code: NBAT3

Frame: 612 - Contemporary White

Details: Signed by Artist | Limited Edition of 50
Giclée Fine Art

Overall Size: 170cm x 125cm (67" x 50")



Nicola Bonney Earthy Elements

In Earthly Elements, Nicola Bonney channels the tactile beauty of clay and earth themes through softly blended neutral hues and textures. Each composition feels like a dreamlike moment of movement, echoing the natural rhythms of the earth. The result is calming, contemplative, and richly textural.

Code: NEE

Frame: 624L - Contemporary Silver with Linen Slip

Details: Signed by Artist | Limited Edition of 75
Giclée Fine Art

Outside Frame Sizes Available:

- 47cm x 47cm (19" x 19")
- 63cm x 63cm (25" x 25")
- 75cm x 75cm (30" x 30")
- 88cm x 88cm (35" x 35")
- 99cm x 99cm (39" x 39")
- 108cm x 108cm (43" x 43")

Collection of 8 Available





CBAB1



CBAB2



CBAB3



CBAB4



CBAB5



CBAB6



CBAB7



CBAB8



CBAB9



Charlotte Morgan | Abstract Chains

With Abstract Chains, Charlotte Morgan captures the momentum of continuing movement frozen in individual forms. Each link appears to tumble between frames, forming a cascade of energy and form. This series brings rhythm and structure together in a beautifully balanced dance.

Code: CBAB

Frame: 424 - Contemporary Silver

Details: Signed by Artist | Limited Edition of 75 | Giclée Fine Art

Outside Frame Sizes Available: 59cm x 59cm (23" x 23") | 71cm x 71cm (28" x 28")



CBAB7

CBAB8



AGD1



AGD2



AGD3



AGD4



AGD5



AGD6



AGD7



AGD8



AGD9



Adrian Bradbury | Garden

This garden-inspired collection features a dynamic composition of geometric shapes akin to tropical palms, layered with textures and intersecting lines. Predominantly earthy tones are punctuated by bold accents, and the complex, structured shapes give the overall collection a modern, almost industrial feel.

Code: AGD

Frame: 438 - Walnut

Details: Signed by Artist | Limited Edition of 295 | Giclée Fine Art

Outside Frame Sizes Available: 43cm x 43cm (17" x 17") | 59cm x 59cm (23" x 23")
71cm x 71cm (28" x 28") | 84cm x 84cm (33" x 33") | 94cm x 94cm (37" x 37") | 106cm x 106cm (42" x 42")





Caroline Martin Dreaming in Blue

Caroline painted these expressive abstracts during the winter months when the light is low and the English skies are not often balmy blue. The painting process of layering washes, inks and fluid mediums is truly immersive and brings Caroline great joy during the seasonal lull. Time spent in the studio listening to music and reminiscing enables Caroline to tap into memories of turquoise seas, sunlit coastlines and warm sky landscapes, which translate wonderfully into abstracted artworks. The painting was a joy to create and oozes positive feeling and buoyant blue life.

Code: DRB

Frame: 612L - Contemporary White with Linen Slip

Details: Signed by Artist | Limited Edition of 295
Giclée Fine Art

Outside Frame Sizes Available:

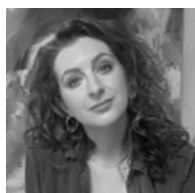
- 51cm x 62cm (21" x 25")
- 71cm x 81cm (28" x 32")
- 88cm x 105cm (35" x 42")
- 99cm x 116cm (39" x 46")
- 108cm x 127cm (39" x 46")

Collection of 6 Available



DRB3

DRB5



Felicity Souter Breathe

Felicity grew up with strong ties to the West Wales coastline, with its vast expanse of sea and sky, and its ever-changing beauty throughout the seasons. Holding a special place in her heart, Felicity loves to try and capture the poetic and beautiful moments in time. She says of her work- 'The sound of the wind, the smell of the sea, and the crunch of the rocks underfoot are captured in the paint through a variety of textures. If you look closely, you'll find the subtle inclusion of every colour of the rainbow, making the paintings appear almost lit from within. I pour a lot of love into my work, which I hope the viewer can feel.'

Code: FSB

Frame: 624L - Contemporary Silver with Linen Slip

Details: Signed by Artist | Limited Edition of 295
Giclée Fine Art

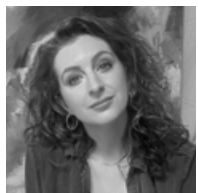
Outside Frame Sizes Available:

- 47cm x 47cm (19" x 19")
- 63cm x 63cm (25" x 25")
- 75cm x 75cm (30" x 30")
- 88cm x 88cm (35" x 35")
- 99cm x 99cm (39" x 39")
- 108cm x 108cm (43" x 43")



FSB1

FSB2



Felicity Souter A New Beginning

A dramatic sunset, or sunrise - depending on how you see it. The paintings are a celebration of the sun breaking through the clouds, because there is always light just waiting to shine through. Felicity's paintings are a reminder to pause and celebrate the beauty that surrounds us, from things like the shifting clouds, the gentle light or the calm expanse of sea and sky. It speaks to those moments when nature reminds us that there is still so much wonder to be found, if only we take the time to see it. Felicity notes that this collection carries a quiet promise: that the best is yet to come, and each day holds the possibility of something extraordinary.

Code: FNB1 & FNB2

Frame: 612L - Contemporary Silver with Linen Slip

Details: Signed by Artist | Limited Edition of 295
Giclée Fine Art

Outside Frame Sizes Available:

- 47cm x 47cm (19" x 19")
- 63cm x 63cm (25" x 25")
- 75cm x 75cm (30" x 30")
- 88cm x 88cm (35" x 35")
- 99cm x 99cm (39" x 39")
- 108cm x 108cm (43" x 43")





Charlotte Morgan Black & Blanc

In Black and Blanc, Charlotte Morgan has bold layers of interpretation - be it graphic, inspired by nature, or simply abstract. The monochrome structure confidently commands attention with quiet complexity, each piece simple yet effective. The artwork is measured and a perfect example of bold modernism.

Code: BBC

Frame: 624L - Contemporary Silver with Linen Slip

Details: Signed by Artist | Limited Edition of 75
Giclée Fine Art

Outside Frame Sizes Available:

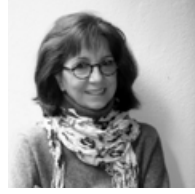
- 47cm x 47cm (19" x 19")
- 63cm x 63cm (25" x 25")
- 75cm x 75cm (30" x 30")
- 88cm x 88cm (35" x 35")
- 99cm x 99cm (39" x 39")
- 108cm x 108cm (43" x 43")

Collection of 4 Available



BBC1

BBC3



Meridith Martens Grey Abstract Stallion

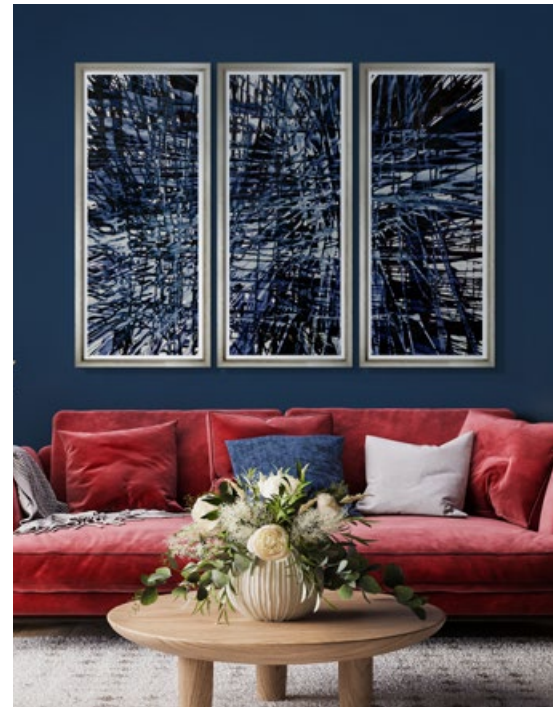
In Grey Abstract Stallion, Meridith Martens captures the expressive, raw energy of a galloping horse through sweeping and moving abstraction. The horse's form emerges in motion, appearing graceful yet powerful with seemingly endless swipes of white paint. This artwork has vitality but is also calming and strong, with modern equine beauty.

Code: MRT9

Frame: 612 - Contemporary White

Details: Signed by Artist | Limited Edition of 50
Giclée Fine Art

Overall Size: 170cm x 125cm (67" x 50")



Meridith Martens Blue and White Spin Art

This piece with its complex variations of blues evokes feelings of energy, whilst the abstract nature of the piece is wide open to interpretation from the viewer. As the paint is distributed across the rotating canvas it creates its own completely unpredictable abstract patterns, which are bursting with energy allowing the viewer to be absorbed by the myriad of textured layers.

Code: MRT2

Frame: 624 - Contemporary Silver

Details: Signed by Artist | Limited Edition of 50
Giclée Fine Art

Overall Size: 170cm x 125cm (67" x 50")



Creative Mark-making Triple

When placed alongside one another, these three abstracts from Trowbridge are at their most effective. The bold blacks tie together perfectly, while the oranges and yellows of the backgrounds form a more complete, unified form that really speak to each other.

Code: AMKT

Frame: 624 - Contemporary Silver

Details: Giclée Fine Art

Overall Size: 258cm x 125cm (102" x 50")

Individual Panel size: 86cm x 125cm (34" x 50")



Eddie Lawrence Mick Jagger III

Eddie Lawrence's pop-art inspired portrait of icon Mick Jagger channels the energy of rock and roll, and creates commentary on the oversaturation of the media and repetition of reporting. It captures Jagger's unmistakable likeness in a style akin to that of Andy Warhol, layering collage and mixed media to form a dynamic composition. Pop culture and artistic innovation collide in this electrifying tribute.

Code: TT1058

Frame: 624 - Contemporary Silver

Details: Signed by Artist | Limited Edition of 50
Giclée Fine Art

Overall Size: 170cm x 125cm (67" x 50")



Charlotte Morgan Black and Copper

This pair of abstracts has a commanding presence with a raw and tactile delivery that excites with contrast and layered textures. Mixed mediums of oil, gesso and inks creates expressive texture.

Code: CPR

Frame: 621L - Contemporary Black with Linen Slip

Details: Signed by Artist
Limited Edition of 75
Giclée Fine Art

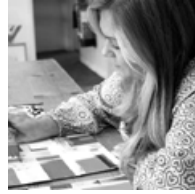
Outside Frame Sizes Available:

- 51cm x 62cm (21" x 25")
- 71cm x 81cm (28" x 32")
- 88cm x 105cm (35" x 42")
- 99cm x 116cm (39" x 46")
- 108cm x 127cm (43" x 50")



CPR1

CPR2



Briony Piper Dupion Dreams

Dupion Dreams has the same kind of aesthetic appeal as peacock feathers in its rich blue and sumptuous gold colouring. The opulence and texture of the painting seems akin to expensive silk, having the effect of a wall covering without any overtly obvious subject matter. The perfect solution to an otherwise flat wall, offering something quietly graceful.

Code: BDD

Frame: 624 - Contemporary Silver

Details: Signed by Artist | Limited Edition of 50
Giclée Fine Art

Overall Size: 170cm x 125cm (67" x 50")



Jessica Zoob Winter

The painting is an emotional tale of the winter season, as ice covers the landscape and wind whistles across the space, like an echo in time. The heavily applied layers of oil paint have been carefully applied to further enhance the feeling of a world covered in a blanket of snow, waiting for spring.

Code: JAPT5

Frame: 624 - Contemporary Silver

Details: Signed by Artist | Limited Edition of 50
Giclée Fine Art

Overall Size: 170cm x 125cm (67" x 50")



Jessica Zoob Collection II Portrait

The captivating and fascinating work of Jessica Zoob never fails to ignite interest and spark curiosity, with her lengthy process of building up layers of paint to convey a mood, moment and sense of stillness in time. This artwork pair is a labour of the artist's passion for capturing the landscape around her, with neutral hues covering deep and rich accents in the space of the frame. The paintings speak volumes of serenity.

Code: JCP

Frame: 624L - Contemporary Silver with Linen Slip

Details: Signed by Artist | Limited Edition of 75
Giclée Fine Art

Outside Frame Sizes Available:

- 51cm x 62cm (21" x 25")
- 71cm x 81cm (28" x 32")
- 88cm x 105cm (35" x 42")
- 99cm x 116cm (39" x 46")
- 108cm x 127cm (43" x 50")



JCP1

JCP2



Jessica Zoob Chinoiserie Collage

East meets West in this collection, as artist Jessica Zoob translates all she has learnt from her quiet Sussex studio in the countryside, to a hustling and bustling workspace in the heart of Hong Kong. Through use of digital collage, physical reworking, and an expressive use of texture and form, Jessica Zoob has made an intriguing collection of artwork which captures attention - and evokes feelings of curiosity within the observer.

Code: JZO

Frame: 640L - Soft Black
with Linen Slip

Details: Signed by Artist
Limited Edition of 295
Giclée Fine Art

Outside Frame Sizes Available:

47cm x 47cm (19" x 19")
63cm x 63cm (25" x 25")
75cm x 75cm (30" x 30")
88cm x 88cm (35" x 35")
99cm x 99cm (39" x 39")
108cm x 108cm (43" x 43")

Collection of 10 Available



JZO3



JZO5





Valerie Davide | Dogs

Meet some 'friends' of artist Valerie Davide. Some well recognised four-legged friends come to life through her charcoal drawings. Her spontaneous outpouring of energy results in images which are both distinctive and full of life. After she retired to North Cornwall following a career as a counsellor, Valerie Davide turned her attention to drawing. She had often used art therapy in her counselling sessions and found it was beneficial to her patients as well fulfilling for herself. Her fluid work sees her lines ebb and flow across the paper, yet the eyes are the focal point of all her work.

Code: VDP & VDL (9 Available in Landscape)

Frame: 412 - Contemporary White

Details: Signed by Artist | Giclée Fine Art

Outside Frame Sizes Available: 47cm x 58cm (19" x 23") | 66cm x 76cm (26" x 30")



Travel Posters Europe

A collection of Retro travel posters which have been delicately restored, taking you on a nostalgic journey right around Europe, from Venice to Paris. The bright fun and whimsy fills your day with joy.

Code: TVE

Frame: 429 - Contemporary Chrome

Details: Giclée Fine Art

Outside Frame Sizes Available:
47cm x 58cm (19" x 23")

Collection of 19 Available



TVE5

TVE9

TVE1



Charlotte Morgan Floral Flourish

A swirl of floral patterns and colours swell from piece to piece in this collection, as artist Charlotte Morgan captures the essence of nature brimming with life. The movement and flow of these mixed media artworks is playful and modern.

Code: CFF

Frame: 424 - Contemporary Silver

Details: Signed by Artist | Limited Edition of 75
Giclée Fine Art

Outside Frame Sizes Available:

- 39cm x 50cm (16" x 20")
- 47cm x 58cm (19" x 23")
- 66cm x 76cm (26" x 30")
- 84cm x 101cm (33" x 40")
- 94cm x 112cm (37" x 44")
- 106cm x 125cm (42" x 50")

Collection of 16 Available





Trish Mitchell Radiant Flowers on White

Artist Trish Mitchell has captured the true essence of botanical beauty. Every brush stroke has been applied as delicately as the petals themselves, with such realism that you could almost reach out and touch it.

Code: TMFW

Frame: 612L - Contemporary White with Linen Slip

Details: Signed by Artist | Limited Edition of 295 | Giclée Fine Art

Outside Frame Sizes Available:

47cm x 47cm (19" x 19") | 63cm x 63cm (25" x 25")
75cm x 75cm (30" x 30") | 88cm x 88cm (35" x 35")
99cm x 99cm (39" x 39") | 108cm x 108cm (43" x 43")

Collection of 6 Available



TMFW2



TMFW1



“My paintings are rooted in stillness, presence, and careful craft, and I’m grateful to share them through a platform that honours that kind of work.”

- Trish Mitchell



Cindy Pretorius Poppy & Peony in Pink

Cindy's Poppy & Peony series are delicate botanical studies full of life and colour that excite and ignite our emotions. The large and engrossing scale of each study is a chance to concentrate on the fine details of the natural world. These masterpieces make an impactful impression and are bursting with visual inspiration.

Code: CPPP

Frame: 612L - Contemporary White with Linen Slip

Details: Signed by Artist | Limited Edition of 295 | Giclée Fine Art

Outside Frame Sizes Available:

51cm x 62cm (21" x 25") | 71cm x 81cm (28" x 32")
88cm x 105cm (35" x 42") 99cm x 116cm (39" x 46")
108cm x 127cm (43" x 50")

Collection of 4 Available



CPPP2



CPPP3





Bridget Davies Walking the Dogs

Bridget Davies likes to capture vintage fashion motifs combined with snapshots of daily life. From that combination are born these inked fashion divas, taking their companions out for a particularly iconic dog walk.

Code: BDL D

Frame: 429 - Contemporary Chrome

Details: Signed by Artist | Limited Edition of 295
Giclée Fine Art

Outside Frame Sizes Available:

- 58cm x 47cm (23" x 19")
- 76cm x 66cm (30" x 26")
- 101cm x 84cm (40" x 33")
- 112cm x 94cm (44" x 37")
- 125cm x 106cm (50" x 42")

Collection of 6 Available in Landscape - BDL D

Collection of 13 Available in Portrait - BDP D

Collection of 4 Available in Square - BDS D



BDL D1



BDL D2





Charlotte Morgan Popping Pansies

Delivering a cheerful burst of colour, Popping Pansies is a vibrant and eye-catching collection that celebrates the natural beauty of the pansy and brings contemporary energy to a classic botanical subject.

Uplifting, bright and bold, this collection of single pansies in full bloom set against strikingly coloured backgrounds, creates a pop-art effect that adds instant personality to any space.

Code: CPOP

Frame: 612L - Contemporary White with Linen Slip

Details: Signed by Artist | Limited Edition of 295
Giclée Fine Art

Outside Frame Sizes Available:

- 47cm x 47cm (19" x 19")
- 63cm x 63cm (25" x 25")
- 75cm x 75cm (30" x 30")
- 88cm x 88cm (35" x 35")
- 99cm x 99cm (39" x 39")
- 108cm x 108cm (43" x 43")

Collection of 10 Available





Liz Clayton Jacaranda Fish II

Jacaranda fish swim their way through the panels of this triptych, their gliding forms highlighted against the soft background. The playfulness of the flying fish is a light-hearted and energetic pattern, their shape mimicking that of ocean waves. The illustrative and painterly style of each fish is the perfect complement to the textured linen-like surround, with soft hues of blue and beige innkeeping with a diverse array of interiors.

Code: LJF

Frame: 612 - Contemporary White

Details: Signed by Artist | Limited Edition of 295
Giclée Fine Art

Overall Size: 170cm x 125cm (67" x 50")





Charlotte Morgan Caribbean Crustaceans

The term 'Crustacean Chic' was coined by Vogue magazine in an article celebrating lobsters in design, and they certainly hit the nail on the head. They are the symbol of design surrealism with their other worldly shape and quirky appearance sparking joy and curiosity, while also globally renowned for their luxurious living connotations. The fun pop-art palette and relaxed textures seen in this collection give us the lively boost of serotonin to brighten up any living space.

Code: CCR

Frame: 400 - Oak

Details: Signed by Artist | Limited Edition of 295
Giclée Fine Art

Outside Frame Sizes Available:

- 47cm x 58cm (19" x 23")
- 66cm x 76cm (26" x 30")
- 84cm x 101cm (33" x 40")
- 94cm x 112cm (37" x 44")
- 106cm x 125cm (42" x 50")

Collection of 12 Available





COL1



COL2



COL3



COL4



COL5



COL6



COL7



COL8



COL9

Charlotte Morgan | Collage of Corals



Created from linocut, Charlotte has crafted a dynamic and satisfying collection of coral collages. The linocut offers a craft-like charm and additional printed texture, that plays in to the natural shape and form of the corals. When arranged together, the differing shades of aqua blues and sea moss greens are akin to a modern fabric design, giving a playful hint to a seabed in a fresh and modern way. The collection of nine has a playful yet calm tone that echoes fresh sea air and warm waters.

Code: COL

Frame: 806 - Gesso and Silver

Details: Signed by Artist | Limited Edition of 295 | Giclée Fine Art

Outside Frame Sizes Available: 52cm x 63cm (21" x 25") | 72cm x 82cm (29" x 33")





Charlotte Morgan Collage of Corals Triptych

Created from linocut, Charlotte has crafted a dynamic and satisfying triptych artwork of collaged corals. The linocut offers a craft-like charm and additional printed texture, that plays in to the natural shape and form of the corals. When arranged together, the differing shades of aqua blues and sea moss greens are akin to a modern fabric design, giving a playful hint to a seabed in a fresh and modern way. The three panels of the triptych artwork have a playful yet calm tone that echoes fresh sea air and warm waters.

Code: COLT

Frame: 612 - Contemporary White

Details: Signed by Artist | Limited Edition of 295
Giclée Fine Art

Overall Size: 170cm x 125cm (67" x 50")



Tranquil Beach Collection

A soft sense of escapism is bought to you in this collection with the faded, almost whimsical colour palette offering a dreamlike quality. It's easy to imagine yourself lounging on one of the umbrella studded beaches or dipping your toes into the cool, gently lapping waters in the midst of a perfectly warm summers day. So, pick your destination!

Code: TBC

Frame: 400 - Oak

Details: Giclée Fine Art

Outside Frame Sizes Available:

58cm x 47cm (23" x 19")

76cm x 66cm (30" x 26")

101cm x 84cm (40" x 33")

112cm x 94cm (44" x 37")

125cm x 106cm (50" x 42")

Collection of 19 Available



TBC1280



TBC1276



Alice Adams Retro Beach

This series of 1950's inspired beach scenes from artist Alice Adams are real mini masterpieces of both the human form and the joy of the seaside. Drenched in sun, figures play on beaches, dive into cool blue pools or just sunbathe elegantly.

Code: LBS

Frame: 424 - Contemporary Silver

Details: Signed by Artist | Limited Edition of 75 | Giclée Fine Art

Outside Frame Sizes Available: 47cm x 58cm (19" x 23") | 66cm x 76cm (26" x 30")

Collection of 21 Available



LBS3

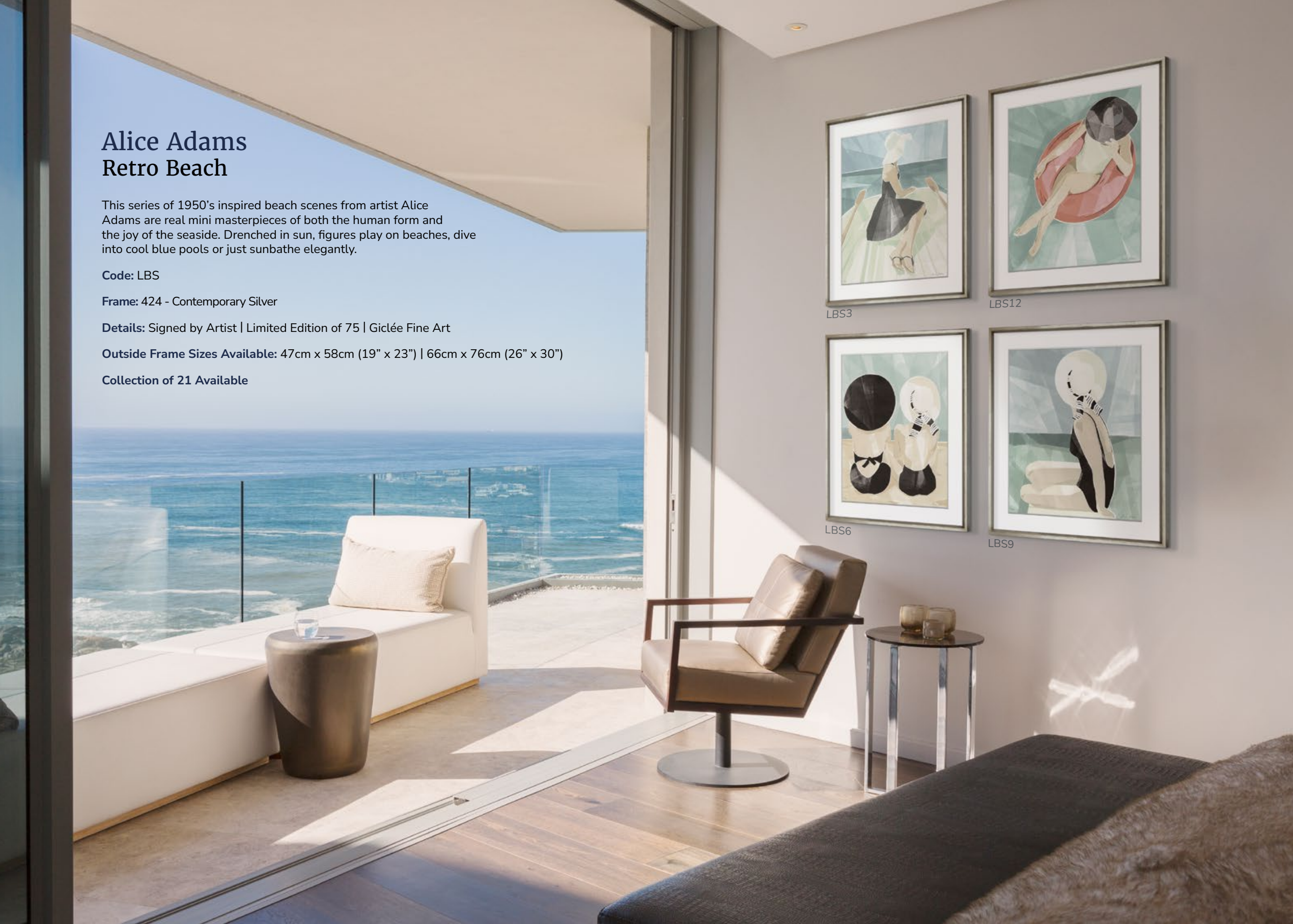
LBS12



LBS6



LBS9





BEA1



BEA2



BEA3



BEA4



BEA5



BEA6



BEA7



BEA10



BEA11



Malcolm Sanders | Antigua Beach

Malcolm Sanders' Antigua Beach series brings the sun-soaked serenity of Caribbean shores to life with painterly softness. His technique blends modern seascapes with traditional impasto, creating textures that seem to move with the light. These coastal scenes feel like cherished memories - gentle, warm, and enduring.

Code: BEA

Frame: 612L - Contemporary White with Linen Slip

Details: Signed by Artist | Limited Edition of 75 | Giclée Fine Art

Outside Frame Sizes Available:

47cm x 47cm (19" x 19") | 63cm x 63cm (25" x 25") | 75cm x 75cm (30" x 30") | 88cm x 88cm (35" x 35")
99cm x 99cm (39" x 39") | 108cm x 108cm (43" x 43")

Collection of 14 Available



Marvellous Miami Triple

An aerial view of a vibrant and busy day at the beach in Miami Florida. The beach is peppered with colourful umbrellas and people enjoying the hot summer weather. The rainbow of colour seen throughout the sunny photograph brings forth memories of family holidays, and exotic days on the beach enjoying the sea air.

Code: TR3190

Frame: 612 - Contemporary White

Details: Giclée Fine Art Photograph

Overall Size: 258cm x 125cm (102" x 50")

Individual Panel size: 86cm x 125cm (34" x 50")





Luxury Charter

A luxury Yacht sails through a perfectly still ocean with clear blue skies, the sunlounger on the bow of the boat inviting you in to relax and take in the far reaching views. The pleasing lines and symmetry draw us in to this scene, warm sun and sea air abounds.

Code: TL3065

Details: Giclée Fine Art Photograph

Frame: 612L - Contemporary White with Linen Slip

Outside Frame Sizes Available:

- 62cm x 51cm (25" x 21")
- 81cm x 71cm (32" x 28")
- 105cm x 88cm (42" x 35")
- 116cm x 99cm (46" x 39")
- 127cm x 108cm (50" x 43")



Code: TT3065 | **Frame:** 612 - Contemporary White | **Overall Size:** 170cm x 125cm (67" x 50")





Peaceful Shoreline

Calming pastel colours mingle into one another in this atmospheric seascape, where you can almost hear the gentle fizz of the waves as they wash across the flat white sand. The colours are effortlessly pleasing with their tranquil and pretty quality.

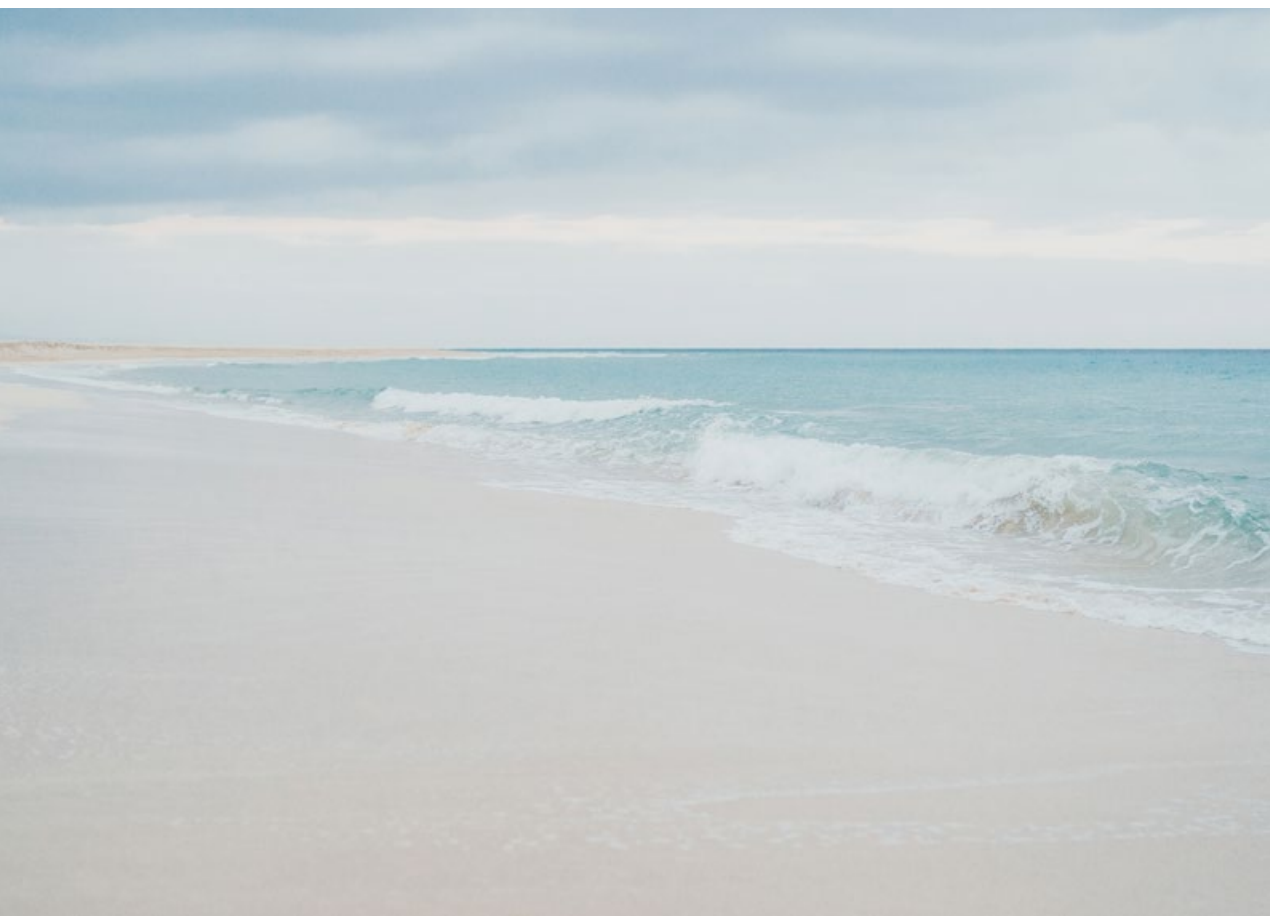
Code: TL3099

Frame: 612L - Contemporary White with Linen Slip

Details: Giclée Fine Art Photograph

Outside Frame Sizes Available:

62cm x 51cm (25" x 21") | 81cm x 71cm (32" x 28")
105cm x 88cm (42" x 35") | 116cm x 99cm (46" x 39")
127cm x 108cm (50" x 43")



Through the Reeds

Sand dune reeds dance gently in a warm coastal breeze, revealing the view of gently lapping waves on the beach below. The textured grass sits in focus against the soft ocean, offering a warmth in tone against the cooler colours of the sea. A perfect beach toned palette of colour.

Code: TL3089

Frame: 612L - Contemporary White with Linen Slip

Details: Giclée Fine Art Photograph

Outside Frame Sizes Available:

62cm x 51cm (25" x 21") | 81cm x 71cm (32" x 28")
105cm x 88cm (42" x 35") | 116cm x 99cm (46" x 39")
127cm x 108cm (50" x 43")



Going on Holiday

Certainly one to bring a smile to your face. Action and adventure is great for some, but sometimes, just sometimes, you need a tortoise walking on a beach with a suitcase - what more can be said? Fun, whimsical and full of story. This chap is clearly making his way to his vacation destination, as he heads off on holiday.

Code: TS1506

Frame: 612L - Contemporary White with Linen Slip

Details: Giclée Fine Art Photograph

Outside Frame Sizes Available:

47cm x 47cm (19" x 19") | 63cm x 63cm (25" x 25")
 75cm x 75cm (30" x 30") | 88cm x 88cm (35" x 35")
 99cm x 99cm (39" x 39") | 108cm x 108cm (43" x 43")



Poised Pinchers

A comically and perfectly timed portrait of a blue land crab. Native to the Atlantic Ocean and Gulf of Mexico, this visually striking crab has been caught in the act, displaying its signature bright blue pincers in the air, poised ready for pinching.

Code: TS2937

Frame: 612L - Contemporary White with Linen Slip

Details: Giclée Fine Art Photograph

Outside Frame Sizes Available:

47cm x 47cm (19" x 19") | 63cm x 63cm (25" x 25")
 75cm x 75cm (30" x 30") | 88cm x 88cm (35" x 35")
 99cm x 99cm (39" x 39") | 108cm x 108cm (43" x 43")



BWLB1



BWLB2



BWLB3



BWLB4



BWLB5



BWLB6



BWLB7



BWLB8



BWLB1



Ben Wood | Boat Bows

Another beautiful collection of fishing boat bows by photographer Ben Wood. The series magically captures the patina of aged timber and peeling paint. The symmetry and angles are pleasing to the eye and the textures cast intrigue.

Code: BWLB

Frame: 624L - Contemporary Silver with Linen Slip

Details: Signed by Artist | Giclée Fine Art Photograph

Outside Frame Sizes Available:

62cm x 51cm (25" x 21") | 81cm x 71cm (32" x 28") | 105cm x 88cm (42" x 35")

116cm x 99cm (46" x 39") | 127cm x 108cm (50" x 43")





Ben Wood Classic Yacht IV

A peaceful moment in time is expertly captured as these two vessels make their way across a calm and mirror-like ocean on a perfectly sunny day. The contrast of the rich deep blue of the ocean is in perfect harmony with the dusky blue sky, punctuated only by the striking silhouettes of these classic yachts.

Code: BWJ51

Frame: 624L - Contemporary Silver with Linen Slip

Details: Signed by Artist
Giclée Fine Art Photograph

Outside Frame Sizes Available:

62cm x 51cm (25" x 21")
81cm x 71cm (32" x 28")
105cm x 88cm (42" x 35")
116cm x 99cm (46" x 39")
127cm x 108cm (50" x 43")





MBLJ2



MBLJ3



MBLJ4



MBLJ5



MBLJ6



MBLJ7



MBLJ8



MBLJ9



MBLJ10

Miami Beach Lifeguard Towers

A candy sweet selection of lifeguard towers, from the fun to the funky, with one that even resembles a spaceship, and each bathed in bright beach sun. The pale sands and blue sea and sky are no match for the bold paint on the boards of the towers - there are bright pinks, alternating yellows and reds and even a stars and stripes pattern. While the shapes and sizes may differ, each is as eye catching as the next.

Code: MBLJ

Frame: 612L - Contemporary White with Linen Slip

Details: Giclée Fine Art Photograph

Outside Frame Sizes Available:

47cm x 47cm (19" x 19") | 63cm x 63cm (25" x 25") 75cm x 75cm (30" x 30") | 88cm x 88cm (35" x 35")
99cm x 99cm (39" x 39") | 108cm x 108cm (43" x 43")



MBLJ1



Suzanne Whitmarsh The Hamptons

The calming and peaceful colours of Sue's Hamptons paintings are the epitome of idyllic beach, with the soft sand fading out to serene blues. All the while the location is beautifully unspoilt and seemingly untouched, a perfect spot for both rest and restoration away from the overwhelming busy hustle and bustle. Sue's minimalist interpretation of the location captures that cool and calm feeling that a beach can emanate, with fine detail found in the texture of the painting's canvas and the delicate indication of soft brushstrokes across the surface.

Code: SUW2

Frame: 612 - Contemporary White

Details: Signed by Artist | Limited Edition of 295
Giclée Fine Art

Outside Frame Sizes Available:

- 60cm x 49cm (24" x 20")
- 79cm x 69cm (31" x 27")
- 103cm x 86cm (41" x 34")
- 114cm x 97cm (45" x 38")
- 125cm x 106cm (50" x 42")



SUW2-1



SUW2-2



Marvellous Miami

An aerial view of a vibrant and busy day at the beach in Miami Florida. The beach is peppered with colourful umbrellas and people enjoying the hot summer weather. The rainbow of colour seen throughout the sunny photograph brings forth memories of family holidays, and exotic days on the beach enjoying the sea air.

Code: TL3190

Frame: 612L - Contemporary White with Linen Slip

Details: Giclée Fine Art Photograph

Outside Frame Sizes Available:

62cm x 51cm (25" x 21")
81cm x 71cm (32" x 28")
105cm x 88cm (42" x 35")
116cm x 99cm (46" x 39")
127cm x 108cm (50" x 43")





The Other Way I

We look to the individual, the free spirit, to set the pace. We all secretly want to be the one that bucks the trend and comes out on top. Or sometimes we want to seek solitude and a space to breathe. This piece allows us to think about either of these view points but doesn't preach to us, just entertains us. Simple, organic and stylish, this piece fits equally in a beach house or in a bustling city apartment. The primary colour blue often symbolises serenity, stability, inspiration, or wisdom. It is a calming colour, and symbolise reliability. Also, the blue is a nod to the ocean and the sky; to freedom and space.

Code: TL982

Frame: 624L - Contemporary Silver with Linen Slip

Details: Giclée Fine Art Photograph

Outside Frame Sizes Available:

62cm x 51cm (25" x 21") | 81cm x 71cm (32" x 28")
 105cm x 88cm (42" x 35") | 116cm x 99cm (46" x 39")
 127cm x 108cm (50" x 43")



Summer of Surf

Adventure awaits with this row of retro style surfboards almost in perfect symmetry, lined up ready for a busy day catching waves out on the surf.

With a bright and cheerful colour palette, this piece transports you straight to the coast on a beautiful summers' day.

Code: TT2791

Frame: 612 - Contemporary White

Details: Giclée Fine Art Photograph

Overall Size:

170cm x 125cm (67" x 50")



Malcolm Sanders Beach Stallions

In Beach Stallions, Malcolm Sanders captures the wild majesty of horses in motion against sweeping landscape backdrops. Sea spray, mist, and movement merge in cinematic beauty. The sepia tones deepen the atmosphere, evoking both timeless strength and poetic freedom.

Code: MBS

Frame: 640 - Soft Black

Details: Signed by Artist | Limited Edition of 75
Giclée Fine Art

Outside Frame Sizes Available:

- 45cm x 45cm (18" x 18")
- 61cm x 61cm (25" x 25")
- 73cm x 73cm (29" x 29")
- 86cm x 86cm (34" x 34")
- 97cm x 97cm (38" x 38")
- 106cm x 106cm (42" x 42")

MBS1



MBS2



MBS3



MBS4



Ben Wood Chantilly Horse Racing Collection

Ben Wood's Chantilly Horse Racing Collection is a love letter to equestrian splendour in motion. Captured at France's most regal racecourse, these sepia-toned photographs echo with tradition and pageantry. Each image feels painterly with its thoughtful composition, alive with energy and the refined glory of a day at the races.

Code: BCRC

Frame: 615 - Dark Walnut

Details: Giclée Fine Art Photograph

Overall Size: 210cm x 162cm (83" x 64")





Ben Wood Horses Under Trees

In Horses Under Trees, Ben Wood presents a moment of hushed beauty - majestic horses slowly trotting beneath the trees on a quiet and still morning. There is a sense of reverence in the soft shadows and dappled light, a perfectly timed glimpse at this story. This photograph is simple yet strong, captured with grace.

Code: BWJ19

Frame: 621L - Contemporary Black with Linen Slip

Details: Giclée Fine Art Photograph

Outside Frame Sizes Available:

62cm x 51cm (25" x 21")
81cm x 71cm (32" x 28")
105cm x 88cm (42" x 35")
116cm x 99cm (46" x 39")
127cm x 108cm (50" x 43")



Free Spirits

Free Spirits celebrates the natural beauty of horses galloping with this perfectly poised pair. Their defined bodies blur slightly in motion, the light falling on their velvet coats and further enhancing the horse's form. It is a portrait of wild hearts, moving together in perfect freedom.

Code: TG-2789

Frame: 621L - Contemporary Black with Linen Slip

Details: Giclée Fine Art Photograph

Outside Frame Sizes Available:

62cm x 51cm (25" x 21")
81cm x 71cm (32" x 28")
105cm x 88cm (42" x 35")
116cm x 99cm (46" x 39")
127cm x 108cm (50" x 43")





Horse on Beach

In Horse on Beach, elegance meets tranquillity as a solitary white horse stands poised against the horizon. Sea and sky blur in gentle blue tones, creating a serene, almost dreamlike atmosphere. This image is quiet poetry - peaceful, still, and utterly timeless.

Code: TL530

Frame: 612 - Contemporary White

Details: Giclée Fine Art Photograph

Outside Frame Sizes Available:
60cm x 49cm (24" x 20") | 79cm x 69cm (31" x 27")
103cm x 86cm (41" x 34") | 114cm x 97cm (45" x 38")
125cm x 106cm (50" x 42")



Ben Wood Templeton Horse

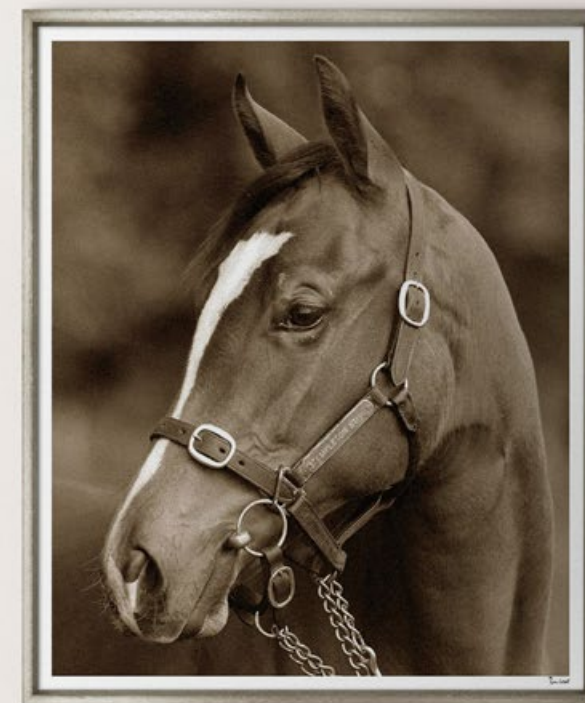
Templeton Horse is a portrait of silent power and gleaming grace. The horse, stood regally and bridled, radiates dignity with every curve of its distinctive form. Ben Wood captures a personality, portraying a mood of wisdom and sophistication.

Code: TP775

Frame: 624 - Contemporary Silver

Details: Signed by Artist | Giclée Fine Art

Outside Frame Sizes Available:
49cm x 60cm (20" x 24")
69cm x 79cm (27" x 31")
86cm x 103cm (34" x 41")
97cm x 114cm (38" x 45")
106cm x 125cm (42" x 50")





April Johnson Horse Power

The power, strength, and fine form of the horse are captured in this striking photograph of a galloping stallion. By revealing only the lower half of the horse, the image conveys an abstract sense of movement and energy, where you can almost feel the rush of air and hear the thunder of galloping hooves. This flurry of vitality makes it perfect for a triptych-style display — an equestrian enthusiast's dream.

Code: APJT9

Frame: 624 - Contemporary Silver

Details: Signed by Photographer | Giclée Fine Art
Limited Edition of 295

Overall Size: 170cm x 125cm (67" x 50")





April Johnson Horses on the Beach

It was time for a well-earned rest on the warm sand, as this sweet moment between two wild horses is captured on camera. The gentle animals shine with rich mahogany coats that gleam in the sun, while the soft white sand and distant seagrasses evoke an immediate sense of calm and ease. This charming pair make wonderful subjects.

Code: APJ2

Frame: 624 - Contemporary Silver

Details: Signed by Photographer | Giclée Fine Art
Limited Edition of 295

Outside Frame Sizes Available:

- 45cm x 45cm (18" x 18")
- 61cm x 61cm (25" x 25")
- 73cm x 73cm (29" x 29")
- 86cm x 86cm (34" x 34")
- 97cm x 97cm (38" x 38")
- 106cm x 106cm (42" x 42")





Julian Lennon Get Away

Get Away is a personal journey frozen in time, as Julian Lennon shares the road that leads to his sanctuary. The winding path, carved between sky and earth, captures a yearning for peace, for breath, for connection to something deeper. It is art as refuge, rendered in light.

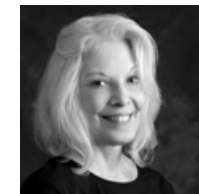
Code: JLTR11

Frame: 640 - Soft Black

Details: Signed by Photographer | Giclée Fine Art

Overall Size: 258cm x 125cm (102" x 50")

Individual Panel size: 86cm x 125cm (34" x 50")



April Johnson Here's Looking at You

An American Black Bear leans across tree branches during a well-earned rest. The captivating creature looks directly into the camera with endearing eyes and soft ears. The young bear's wistful expression only enhances the charm of this piece.

Code: APJ8

Frame: 615L - Contemporary Silver with Linen Slip

Details: Signed by Photographer | Giclée Fine Art
Limited Edition of 295

Outside Frame Sizes Available:
62cm x 51cm (25" x 21") | 81cm x 71cm (32" x 28")
105cm x 88cm (42" x 35") | 116cm x 99cm (46" x 39")
127cm x 108cm (50" x 43")





Highland Cow

Our glorious Highland Cow stands amidst the rest of the northern cattle on the moors in the Yorkshire Dales National Park. Something has caught the attention of this large beast as he stops grazing to look up between his soft shaggy head of hair. However, don't let his long fluffy locks detract you from the hard horns which protrude, damaged from previous scuffles.

Code: TL1101

Frame: 624L - Contemporary Silver with Linen Slip

Details: Giclée Fine Art Photograph

Outside Frame Sizes Available:

62cm x 51cm (25" x 21") | 81cm x 71cm (32" x 28")
105cm x 88cm (42" x 35") | 116cm x 99cm (46" x 39")
127cm x 108cm (50" x 43")



Magnificent Stag

The majestic stag stands like a living sculpture in our gaze, the branching antlers creating grandeur and impressive poise. The stag stands alert, centre to the frame and commanding focus. Our gaze is drawn in by the clean and quietly simple surround, the attention and focus cast upon the mighty stag, with its piercing eyes and calm demeanour charming us. The isolated style of the subject on the background is a sophisticated and modern take on wildlife photography, with the naturally expansive shape of the animal creating an abstract form.

Code: TT863

Frame: 624 - Contemporary Silver

Details: Giclée Fine Art Photograph

Overall Size: 170cm x 125cm (67" x 50")





Jamie Thom Head On

What a magnificently striking portrait of an elephant bull in its natural habitat of Botswana, Africa. The contrast of black and white gives the skin such texture and dimension. Jamie Thom has created a sense of story and narrative as this lone bull makes a trek across the landscape.

Code: JTH3

Frame: 624L - Contemporary Silver with Linen Slip

Details: Signed by Artist | Limited Edition of 295
Giclée Fine Art

Overall Size:

51cm x 62cm (21" x 25") | 71cm x 81cm (28" x 32")
88cm x 105cm (35" x 42") | 99cm x 116cm (39" x 46")
108cm x 127cm (43" x 50")



Jamie Thom Eye to Eye

Majestic and powerful, the female lion looks up from the edge of a savanna vista. Her eyes locking with the lens of the camera, we are instantly drawn in by her striking and commanding gaze. Jamie Thom's photo is bold and captivating.

Code: JTH1

Frame: 624L - Contemporary Silver with Linen Slip

Details: Signed by Artist | Limited Edition of 295
Giclée Fine Art

Overall Size:

51cm x 62cm (21" x 25") | 71cm x 81cm (28" x 32")
88cm x 105cm (35" x 42") | 99cm x 116cm (39" x 46")
108cm x 127cm (43" x 50")



Spot the Difference

A spot of cute and light-hearted humour, as a dalmatian starts joining the dots and realising there is an imposter in town. The perfect addition to any dog lover's interior.

Code: TL2960

Frame: 621 - Contemporary Black

Details: Giclée Fine Art

Outside Frame Sizes Available:

60cm x 49cm (24" x 20")
79cm x 69cm (31" x 27")
103cm x 86cm (41" x 34")
114cm x 97cm (45" x 38")
125cm x 106cm (50" x 42")



Avenue of Trees

Avenue of Trees draws you into a quiet journey beneath a canopy of nature's quietly falling leaves. Autumn's fall leaves scatter the path like a confetti, while the tree trunks stand in noble, linear formation. The winding road inspires daydreamers - like an invitation to head down the outstretching road beyond.

Code: CWST38

Frame: 624 - Contemporary Silver

Details: Giclée Fine Art Photograph

Overall Size: 170cm x 125cm (67" x 50")





Malcolm Sanders Peaceful Colonnades

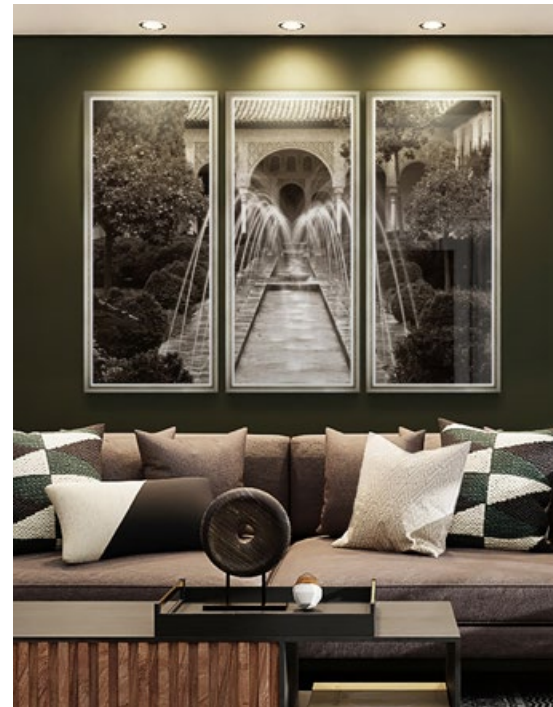
In Peaceful Colonnades, Malcolm Sanders paints with light, capturing the rhythm of arches stretching toward a centre focal point. The soft sepia tonal palette and architectural symmetry create a space that invites reflection. It is a calming composition, where serenity lingers long after the gaze moves on.

Code: MSST1

Frame: 624 - Contemporary Silver

Details: Signed by Photographer
Limited Edition of 50 | Giclée Fine Art

Overall Size: 170cm x 125cm (67" x 50")



Alhambra, Spain

Alhambra, Spain reveals the soul of a historic place through movement and grace. The fountains spray water that arcs like ribbons, echoing the ornate architecture behind them. This well-composed photograph bridges past and present in a dreamlike dance of water and stone.

Code: CWST126

Frame: 624 - Contemporary Silver

Details: Giclée Fine Art Photograph

Overall Size: 170cm x 125cm (67" x 50")

Olympic High Dive Sepia

With expert poise and execution, Patricia McCormick of Los Angeles shows off her championship form as she dives from the Olympic springboard in 1952 at the Helsinki Olympics, Finland. Patricia went on to win both the springboard and platform diving gold medals and replicated this success in the 1956 Melbourne Olympics. Only Greg Louganis has been able to equal her prowess on the diving board.

Code: TTS70

Frame: 612 - Contemporary White

Details: Giclée Fine Art Photograph

Overall Size: 170cm x 125cm (67" x 50")



Diver Triple

Simple, stylish and minimal, this Diver Triple is equally at home in a contemporary beach house as it is in a sleek Manhattan apartment, due to its refined colour palette and playful nature. Our eye is drawn through the individual panels from left to right, admiring the diver's perfectly poised elegance and leaving us to imagine the final splashdown.

Code: TR1060

Frame: 600 - Oak

Details: Giclée Fine Art Photograph

Overall Size: 258cm x 125cm (102" x 50")

Individual Panel size: 86cm x 125cm (34" x 50")





Willie Christie Retro Glamour

Retro Glamour by Willie Christie is a cinematic moment suspended in sun and shadow. The model, anonymous behind her wide-brimmed hat and oversized sunglasses, radiates mystery and timeless style. This image doesn't just capture a figure - it captures a feeling.

Code: WCJC

Frame: 624 - Contemporary Silver

Details: Giclée Fine Art Photograph

Outside Frame Sizes Available:

- 45cm x 45cm (18" x 18")
- 61cm x 61cm (25" x 25")
- 73cm x 73cm (29" x 29")
- 86cm x 86cm (34" x 34")
- 97cm x 97cm (38" x 38")
- 106cm x 106cm (42" x 42")



WCJC1

WCJC8

Interior Dome Collection

Never forget to look up! You might miss out on something as incredible as these Interior Domes, from locations including St. Pauls Cathedral UK, Galleria Vittorio Emanuele in Milan and the US Capitol Rotunda. Each of these intricate and unique interiors is an architectural feast for the eyes, offering pleasing symmetry and a unique talking point.

Code: IDC

Frame: 624 - Contemporary Silver

Details: Giclée Fine Art

Outside Frame Sizes Available:

45cm x 45cm (18" x 18") | 61cm x 61cm (25" x 25")
73cm x 73cm (29" x 29") | 86cm x 86cm (34" x 34")
97cm x 97cm (38" x 38") | 106cm x 106cm (42" x 42")

Collection of 16 Available



IDC973



IDC1605





Christopher Hoffee Tower Bridge

This is the Tower Bridge in Sacramento California. In colour it is bright yellow, but black and white was chosen in its finality for us to focus on the structure and the power of man's ingenuity and ability. It is the details and sheer power of the bridge that is illuminated here.

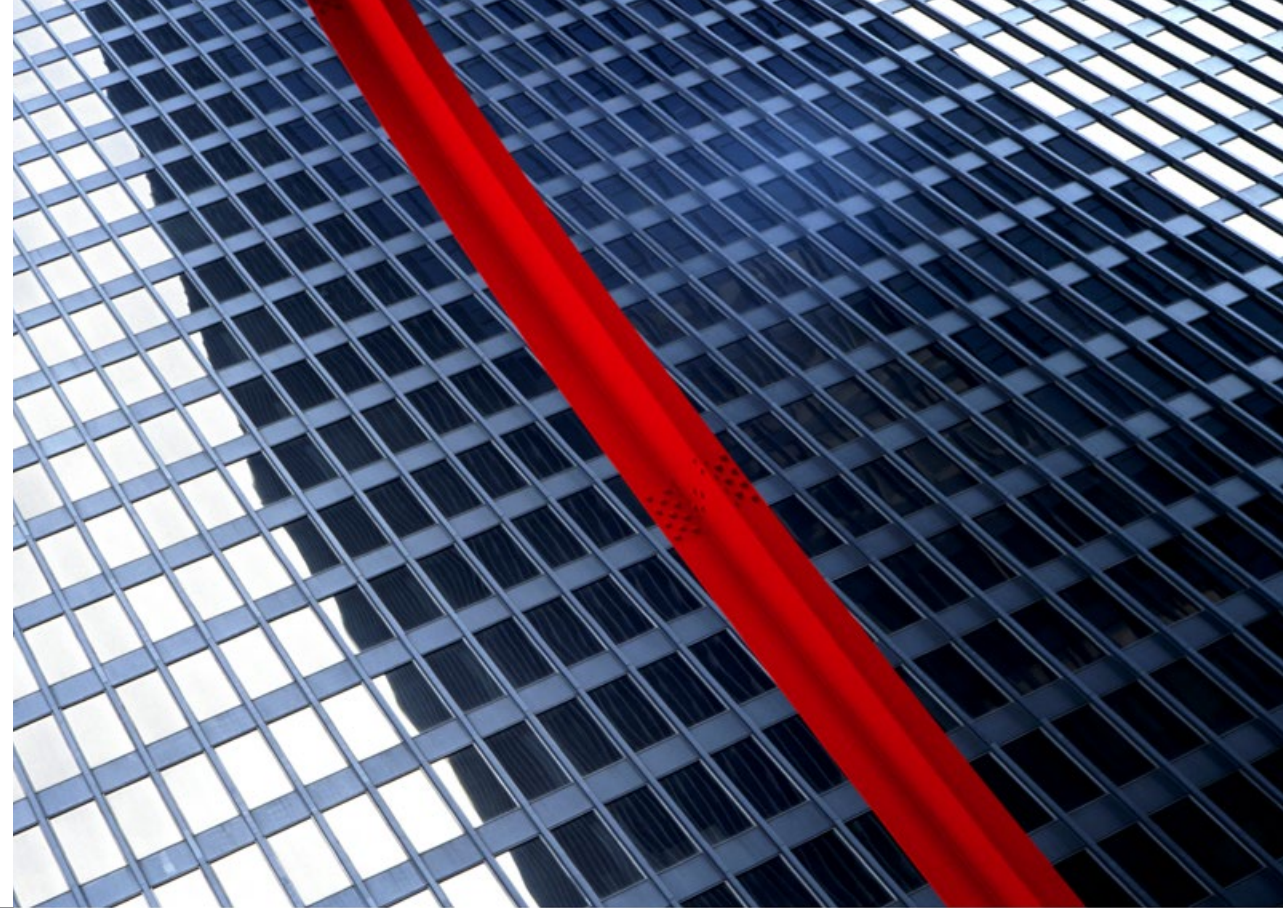
Code: CHT

Frame: 624L - Contemporary Silver with Linen Slip

Details: Signed by Artist | Limited Edition of 295
Giclée Fine Art

Overall Size:

51cm x 62cm (21" x 25") | 71cm x 81cm (28" x 32")
88cm x 105cm (35" x 42") | 99cm x 116cm (39" x 46")
108cm x 127cm (43" x 50")



Nick Lewin Reflections of Structure

The repetition of pattern in the form of a high-rise building is interrupted proudly by a curved red beam of steel. The swathe of red cuts through the grid, creates a pop of colour and form combined. The photograph is a dynamic view of modern architecture and gives us a sense of great scale.

Code: NLR

Frame: 624L - Contemporary Silver with Linen Slip

Details: Signed by Artist | Limited Edition of 295
Giclée Fine Art

Overall Size:

62cm x 44cm (25" x 18") | 81cm x 56cm (32" x 23")
105cm x 73cm (42" x 29") | 127cm x 88cm (50" x 35")



Architecture Collection

Sepia-toned photographs of architectural details transform simple elements into timeless sculptures, with the warm hues softening the sharp geometry of the archways and skylights. The fade of colour helps to focus on the shadows and shapes, with light filtering through the masterfully enacted designs. There is a visual strength in these bold structures, shown with something of a poetic beauty.

Code: ATR

Frame: 624 - Contemporary Silver

Details: Giclée Fine Art Photograph

Outside Frame Sizes Available:

- 45cm x 45cm (18" x 18")
- 61cm x 61cm (25" x 25")
- 73cm x 73cm (29" x 29")
- 86cm x 86cm (34" x 34")
- 97cm x 97cm (38" x 38")
- 106cm x 106cm (42" x 42")

Collection of 9 Available



Elk in the Room

The artwork Elk in the Room is a surreal and curious imagining of when nature and mankind meet. The opulent interior of the room, with its panelled walls and high ceilings are seemingly the perfect place for the majestic deer. Dark walls make the animal stand out, with a warm beam of sunlight finding its way through the window. The artwork is fun and unexpected, making it really stand out when hung in a space.

Code: TL2321

Frame: 624L - Contemporary Silver with Linen Slip

Details: Giclée Fine Art Photograph

Outside Frame Sizes Available:

- 62cm x 51cm (25" x 21")
- 81cm x 71cm (32" x 28")
- 105cm x 88cm (42" x 35")
- 116cm x 99cm (46" x 39")
- 127cm x 108cm (50" x 43")





Alpine Lake

This lake in the Alps seems perfectly serene, the layer of mist on the water and the low hanging cloud gives it an ethereal quality.

Code: TL2958

Frame: 615 - Dark Walnut

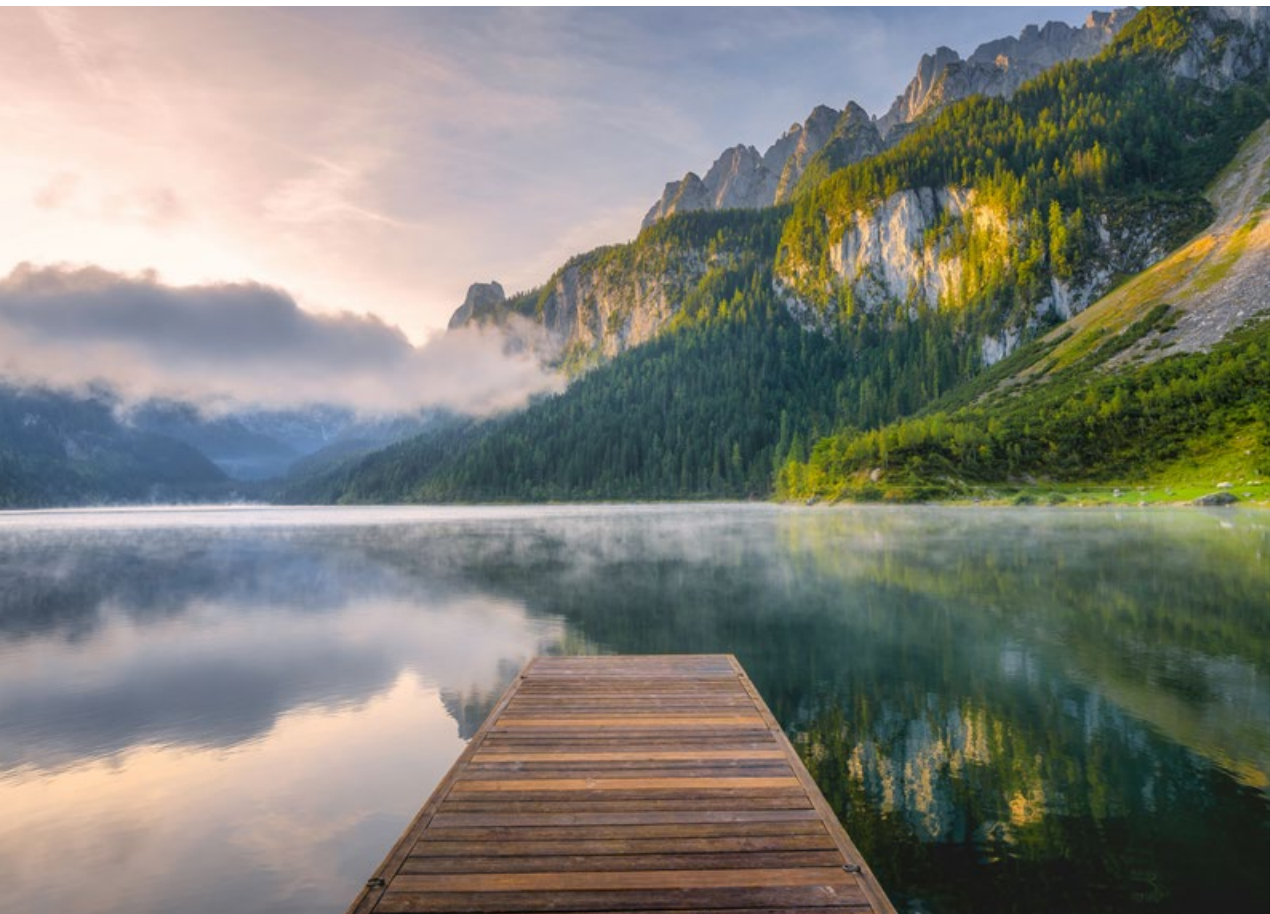
Details: Giclée Fine Art Photograph

Outside Frame Sizes Available:

60cm x 49cm (24" x 20") | 79cm x 69cm (31" x 27")

103cm x 86cm (41" x 34") | 114cm x 97cm (45" x 38")

125cm x 106cm (50" x 42")



Reach New Heights

In Denali National Park, Alaska, a small red propeller plane prepares to take off with breathtaking views of the dramatic mountainscape ahead. Striking and captivating, the bold red of the plane combined with the saturated blue sky is a fantastic contrast against the white snow and cloud-capped mountains. The scene conjures feelings of adventure and freedom, offering a cinematic quality. A wonderful blending of the man-made and the natural world.

Code: TT3061

Frame: 624 - Contemporary Silver

Details: Giclée Fine Art Photograph

Overall Size: 170cm x 125cm (67" x 50")



Off Piste Skiing

A daring off-piste skier gets big air as he makes his way down the mountain with freshly fallen powder snow, his bright orange jacket punctuating the beautifully frozen landscape around him.

Code: TL3121

Frame: 612L - Contemporary White with Linen Slip

Details: Giclée Fine Art Photograph

Outside Frame Sizes Available:

62cm x 51cm (25" x 21") | 81cm x 71cm (32" x 28")
105cm x 88cm (42" x 35") | 116cm x 99cm (46" x 39")
127cm x 108cm (50" x 43")



Alpine Touring

An aerial view following a group of skiers as they form a line through an alpine trail, their brightly coloured clothes punctuating the freshly fallen, crisp white snow that surrounds them.

Code: TP2037

Frame: 624L - Contemporary Silver with Linen Slip

Details: Giclée Fine Art Photograph

Outside Frame Sizes Available:

51cm x 62cm (21" x 25") | 71cm x 81cm (28" x 32")
88cm x 105cm (35" x 42") | 99cm x 116cm (39" x 46")
108cm x 127cm (43" x 50")

Vintage Ski Collection

There is a rich history attached to the pastime of skiing; humankind conquering the elements and the landscape to feel the thrill of shredding through soft powdered snow, as they hurtle down the slope for that adrenaline rush of excitement. With a mix of historical and more modern photography, the various snowy shots create a wonderful abstract pattern and each piece tells a story.

Code: VSKC

Frame: 412 - Contemporary White

Details: Giclée Fine Art Photograph

Overall Size: 200cm x 155cm (79" x 61")





Matching Outfits

Everyone has had the experience of showing up to an event with the same outfit as one of the other attendees. In this fun and unexpected vintage photo, a young child comes face to face with a zebra, while sporting a strikingly similar set of stripes. The 1920's photo is an unexpected gem.

Code: TG-3104

Frame: 424 - Contemporary Silver

Details: Giclée Fine Art Photograph

Outside Frame Sizes Available:
58cm x 47cm (23" x 19") | 76cm x 66cm (30" x 26")



Skyline Mirror

The New York skyline at night shimmers like a constellation of stars, only instead of stars, towering skyscrapers pepper the horizon with their radiant glow. The Hudson River becomes a silken mirror, rippled gently as it mimics the city's brilliance. Against the dark sky we see outlines of iconic buildings and unforgettable places, all captured in a moment of stillness for the ever-energetic city.

Code: TG-2744

Frame: 424 - Contemporary Silver

Details: Giclée Fine Art Photograph

Outside Frame Sizes Available:
58cm x 47cm (23" x 19") | 76cm x 66cm (30" x 26")





Jamie Trowbridge Classic Roadway

The car featured in this photograph by Jamie Trowbridge is an electric car, designed to look exactly like an early 20th century vehicle, but without any of the pitfalls of regular motoring. The scene set is one of laid back european lifestyle, rich with story and history.

Code: TG-3038

Frame: 424 - Contemporary Silver

Details: Giclée Fine Art Photograph

Outside Frame Sizes Available:

58cm x 47cm (23" x 19") | 76cm x 66cm (30" x 26")
101cm x 84cm (40" x 33") | 112cm x 94cm (44" x 37")
125cm x 106cm (50" x 42")



Jamie Trowbridge Archway Architecture

The arches lead us down the frame and the light coming through the columns casts soft shadows, as the line of lamps indicates a softly lit and very atmospheric location. Simple but very effective in delivering historical architectural aesthetics.

Code: TG-3039

Frame: 424 - Contemporary Silver

Details: Giclée Fine Art Photograph

Outside Frame Sizes Available:

47cm x 58cm (19" x 23") | 66cm x 76cm (26" x 30")
84cm x 101cm (33" x 40") | 94cm x 112cm (37" x 44")
106cm x 125cm (42" x 50")

2014 Mercedes SLS Gull-wing

An expertly lit studio provides an excellent backdrop to the modern and revised design of the classic Gull-wing. The direct lighting shines across the body of the car, allowing the materials to gleam.

Code: TGT-782

Frame: 629 - Contemporary Chrome

Details: Giclée Fine Art Photograph

Overall Size: 170cm x 125cm (67" x 50")





1967 Mustang

A powerful photograph of a classic 1967 Mustang, with its bold styling, iconic taillights and chrome trim. The car is an unmistakable icon of 'American muscle' with a powerful V8 engine that delivers raw power.

This low-lit studio photograph uses lighting to accentuate the short rear deck and signature fastback roofline, the car's angles shining in architectural glory.

Code: TL2317

Frame: 629 - Contemporary Chrome

Details: Giclée Fine Art Photograph

Outside Frame Sizes Available:

60cm x 49cm (24" x 20") | 79cm x 69cm (31" x 27")
103cm x 86cm (41" x 34") | 114cm x 97cm (45" x 38")
125cm x 106cm (50" x 42")



Porsche

The silver Porsche gleams under the soft lighting, its smooth curves and vintage design accentuated by the monochrome contrast of the photo. Shadows emphasize its timeless elegance and streamlined body, while the polished chrome details catch the light of the studio lamps.

The simple sophistication of the photograph highlights Porsche's dedication to blending form with function, ensuring the car is as iconic today as when it first hit the roads.

Code: TL2046

Frame: 629 - Contemporary Chrome

Details: Giclée Fine Art Photograph

Outside Frame Sizes Available:

60cm x 49cm (24" x 20") | 79cm x 69cm (31" x 27")
103cm x 86cm (41" x 34") | 114cm x 97cm (45" x 38")
125cm x 106cm (50" x 42")



Maserati

The 1956 Maserati A6G was the factory demonstrator for the famous Italian Mille Miglia race. It was one of the first cars suitable for both track and public roads. To meet demand in the early 1950's Maserati turned to Coachbuilder Zagato to create an alloy body for a GT car weighing less than 1,800 pounds using aircraft streamlining. Only 20 Zagatos were ever produced, each of which were custom made.

Code: TG-1086

Frame: 629 - Contemporary Chrome

Details: Giclée Fine Art Photograph

Outside Frame Sizes Available:

60cm x 49cm (24" x 20")
79cm x 69cm (31" x 27")
103cm x 86cm (41" x 34")
114cm x 97cm (45" x 38")
125cm x 106cm (50" x 42")





JFT1



JFT2



JFT3



JFT4



JFT5



JFT6



JFT7



JFT8



JFT9



JFT10



JFT11



JFT12

Japanese Fantasy Flowers

Japanese fantasy flowers finished off by hand with a subtle vintage staining. These colourful Art Deco floral images are fine art giclée reproductions of original designs used to produce hand-painted wallpaper. These elaborate floral prints are a bold statement piece with elements of fascinating detail. As treasures of the orient, the designs are a throwback to an age of high society and early exploration. Many of the wealthy paid handsomely to acquire such ornate designs from exotic locations.

Code: JFT

Frame: 810 - Black and Antique Gold

Details: Giclée Fine Art

Outside Frame Sizes Available: 52cm x 63cm (21" x 25") | 72cm x 82cm (29" x 33")



JFT4

JFT2

JFT1



1



BBN2



BBN3



BBN4



BBN5



BBN6

Besler Botanicals on Navy

Basilus Besler was responsible for the most celebrated florilegium ever published. These giclee reproductions are of antique prints in our archives and have been remastered to achieve a bold and contemporary twist on a timeless classic.

Code: BBN

Frame: 810 - Black and Antique Gold

Details: Giclée Fine Art

Outside Frame Sizes Available: 52cm x 63cm (21" x 25") | 72cm x 82cm (29" x 33")
89cm x 106cm (35" x 42") | 100cm x 117cm (40" x 46") | 109cm x 128cm (43" x 51")

BBN4



BBN2





IFG1



IFG2



IFG3



IFG4



IFG5



IFG6



IFG7



IFG8



IFG9



IFG10



IFG11



IFG12

Imperial Flowers Blue and Grey

This botanical collection is inspired by the flowers that grew in The Imperial Gardens which were created by Francis 1st of Austria in 1791 and are still one of Vienna's most beloved treasures.

Code: IFG

Frame: 424 - Contemporary Silver

Details: Giclée Fine Art

Outside Frame Sizes Available: 47cm x 58cm (19" x 23") | 66cm x 76cm (26" x 30")



Efflorescence

A collection of lively florals from the original work of Joseph Nigg (1782-1863), an Austrian painter who's work is known for its delicate beauty and attention to detail. The traditional charm has been retained whilst the colours and details have been delicately updated for a fresh and contemporary look.

Code: EFL

Frame: 810 - Black & Antique Gold

Details: Giclée Fine Art

Outside Frame Sizes Available:

48cm x 48cm (19" x 19") | 64cm x 64cm (26" x 26")
76cm x 76cm (30" x 30") | 89cm x 89cm (35" x 35")
100cm x 100cm (40" x 40") | 109cm x 109cm (43" x 43")

Collection of 9 Available

EFL4



EFL5



EFL8



EFL2



EFL6



EFL9



Robert Thornton Tulips

From Robert John Thornton's Temple of Flora Collection, the artwork shows seven colourfully restored tulips. These bright colours set against the softly clouded sky, gives an almost dreamlike quality. These unique pieces were the first floral studies with landscape backgrounds, eluding to the natural habitat of the plant. The appearance of these flowers against the scenery is a modern presentation of something classical.

Sacred Egyptian Lotus

This botanical illustration depicts a pair of lotus flowers in bloom. In the background, tranquil and exotic setting can be seen. Taken from Robert John Thorntons Temple of Flora collection, this artwork showcases exquisite artistry of botanical study, celebrating the elegance and symbolism of the lotus. The Temple of Flora, has survived as one of the most beautiful botanical publications of modern times, with few originals surviving to this day.

Codes: TF56 | TF76

Frame: 637 - Lemon Gold Wedge

Details: Giclée Fine Art

Outside Frame Sizes Available:

49cm x 60cm (20" x 24") | 69cm x 79cm (27" x 31")
86cm x 103cm (34" x 41") | 97cm x 114cm (38" x 45")
106cm x 125cm (42" x 50")



TF56



TF76





Louisiana Heron

This Louisiana Heron has a beautifully blue plumage, and stands out as an impressive creature surrounded by the rich green foliage on this swampy river bank.

Code: TF73

Frame: 637 - Lemon Gold Wedge

Details: Giclée Fine Art

Outside Frame Sizes Available:
60cm x 42cm (24" x 17") | 79cm x 54cm (31" x 22")
103cm x 71cm (41" x 28") | 125cm x 86cm (50" x 34")



Roseate Spoonbill

So much warmth radiates out of the frame from this Spoonbill, as it's bright pink accentuates the tones found in the gold patterned skyline, and the rich green underbrush framing the subject.

Code: TF71

Frame: 637 - Lemon Gold Wedge

Details: Giclée Fine Art

Outside Frame Sizes Available:
60cm x 42cm (24" x 17") | 79cm x 54cm (31" x 22")
103cm x 71cm (41" x 28") | 125cm x 86cm (50" x 34")

Ancient Cuttlefish

These traditional illustrations of a cuttlefish have been stylishly re-imagined for a contemporary interior. The cuttlefish is depicted in a deep-sea environment, with the central composition showcasing the otherworldly beauty and anatomy of the creature. The cuttlefish have been illustrated with radiating bands of colour including shimmering blues and golden browns, giving it an iridescent quality reminiscent of its real-life colour-changing displays.

Code: TF80 | TF81

Frame: 624 - Contemporary Silver

Details: Giclée Fine Art

Outside Frame Sizes Available:

40cm x 58cm (16" x 23") | 52cm x 76cm (21" x 30")
69cm x 101cm (27" x 40") | 84cm x 123cm (33" x 49")



TF80



TF81



Blue Fish I & II

This remastered traditional etching by Marcus Elieser Bloch highlights the detail of every fin, scale and contour of the creature's form.

Layered with equally resplendent illustrations of vibrant corals, these exquisite engravings of fish come from the 18th century book *Allgemeine Naturgeschichte der Fische*.

The modern artwork brings new life to oceanic study, using a combination of vibrant colour and soft hues. There's no need for a fishtank when such a beautiful specimen is on show.

Code: TF165 & TF166

Frame: 437 - Lemon Gold

Details: Giclée Fine Art

Outside Frame Sizes Available:

- 58cm x 47cm (23" x 19")
- 76cm x 66cm (30" x 26")
- 101cm x 84cm (40" x 33")
- 112cm x 94cm (44" x 37")
- 123cm x 104cm (49" x 41")



TF165

TF166

La Demoiselle De Numidie & L'oiseau Royal

The Demoiselle crane, the smallest of the crane species, is native to Eurasia and migrates to warmer India during the winter. With its elegant slate-grey plumage, striking white ear tufts and piercing red eyes, the bird exudes regal grace that has inspired poetry and art across history. The delicate synchronicity of the Demoiselle flock is like a ballet dance, while each bird has poise and feminine beauty.

Known simply as the 'royal bird', the L'oiseau Royal stands proudly, as its gold coloured diadem of feathers act as the perfect crown. The slender neck and velvet-like plumage immediately caught the eye of European naturalists studying exotic species throughout the 1700's. During a time of ornithological enlightenment, we can see how this splendid crane is full of striking presence and captivated those who caught a glimpse of it.

Code: TF197 | TF198

Frame: 637 - Lemon Gold Wedge

Details: Giclée Fine Art

Outside Frame Sizes Available:

42cm x 60cm (17" x 24") | 54cm x 79cm (22" x 31")
71cm x 103cm (28" x 41") | 86cm x 125cm (34" x 50")



TF197



TF198



TROWBRIDGE

GALLERY LONDON



Trowbridge Gallery, 555 Kings Road, London, SW6 2EB

To Order: 📞 UK: +44 (0)1892 667600 | 📞 US: (336) 886 3549 | ✉️ sales@trowbridge.art

trowbridgegallery.com

Spring 2026

© TROWBRIDGE Gallery 1981 - 2026. All rights reserved. Images must not be reproduced without written permission.

TROWBRIDGE

GALLERY LONDON

To Order:

📞 UK: +44 (0)1892 667600

📞 US: (336) 886 3549

✉️ sales@trowbridge.art

🌐 trowbridgegallery.com

555 KINGS ROAD LONDON SW6